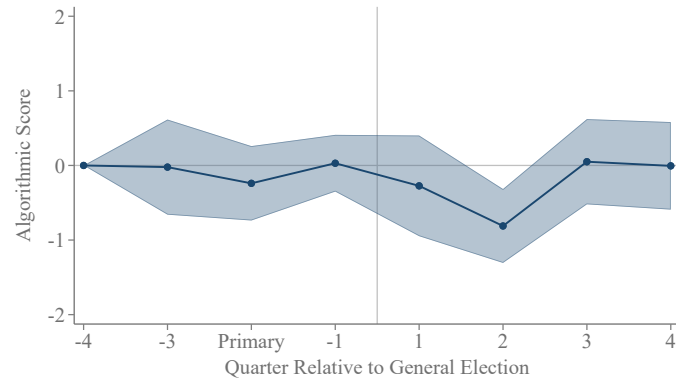
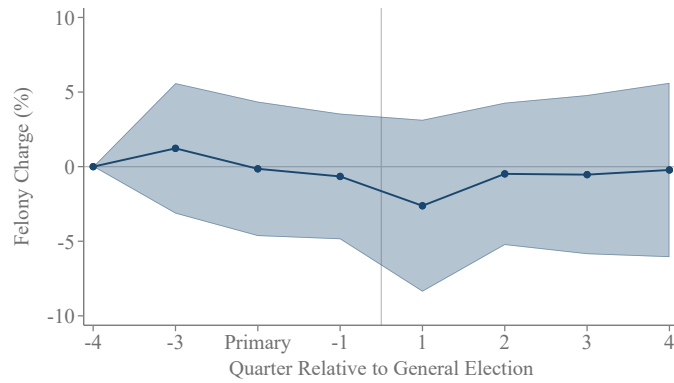


Algorithmic Recommendations When the Stakes are High:
Evidence from Judicial Elections
Online Appendix

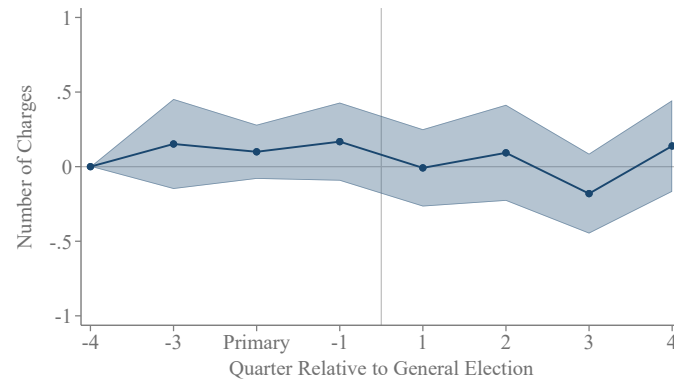
Victoria Angelova, Harvard University
Will Dobbie, Harvard Kennedy School & NBER
Crystal S. Yang, Harvard Law School & NBER



A. Algorithmic Score



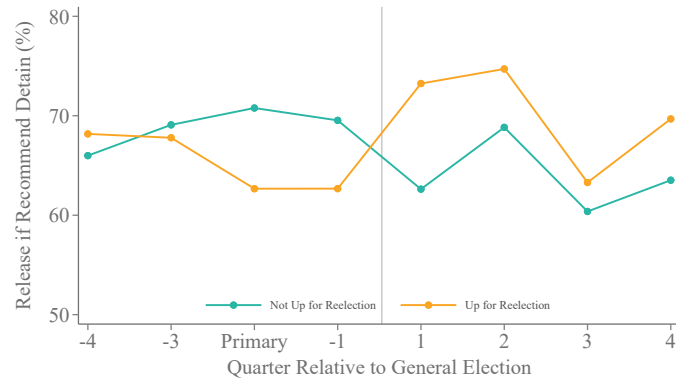
B. Felony Charge



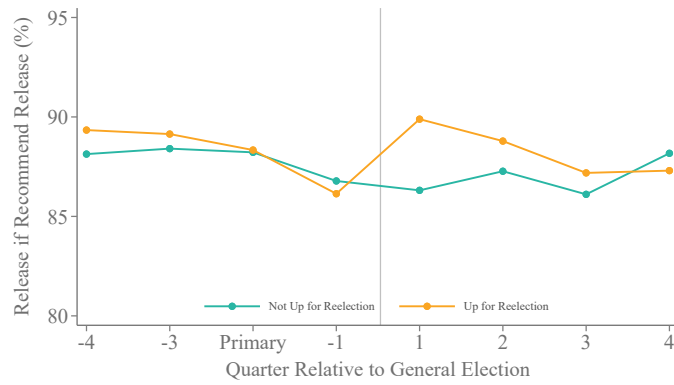
C. Number of Charges

FIGURE A.1. RESULTS FOR CASE CHARACTERISTICS

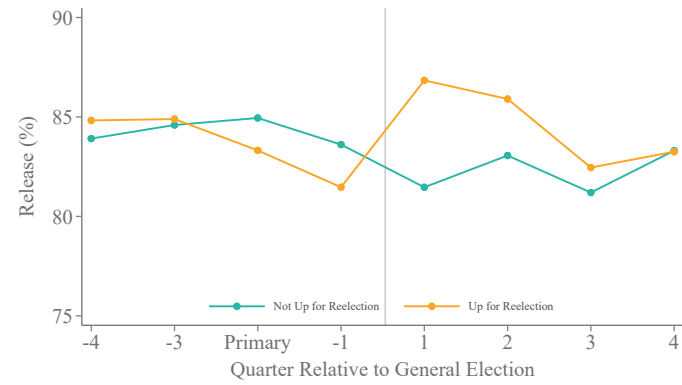
Notes: This figure plots difference-in-differences estimates of judicial elections on case characteristics. Panel A reports results for the algorithmic risk assessment, Panel B reports results for the likelihood of presiding over a case with a felony charge, and Panel C reports results for the total number of charges. See the notes of Figure 1 for additional details.



A. Release if Recommend Detain



B. Release if Recommend Release



C. Release

FIGURE A.2. PRETRIAL RELEASE DECISIONS BEFORE AND AFTER THE ELECTION

Notes: This figure plots average case outcomes for judges up for reelection (orange line) and judges not up for reelection (green line). The horizontal axis denotes time, in quarters, relative to the general election. See the notes of Figure 1 for additional details.

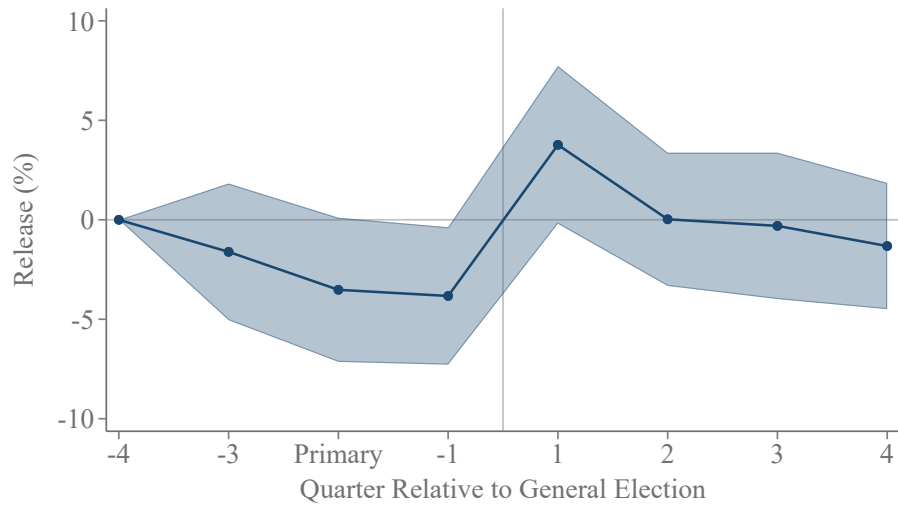


FIGURE A.3. RESULTS WITH A BALANCED PANEL OF JUDGES

Notes: This figure plots difference-in-differences estimates for the subsample of judges who hear cases in every quarter before and after the general election over the study period. See the notes of Figure 1 for additional details.

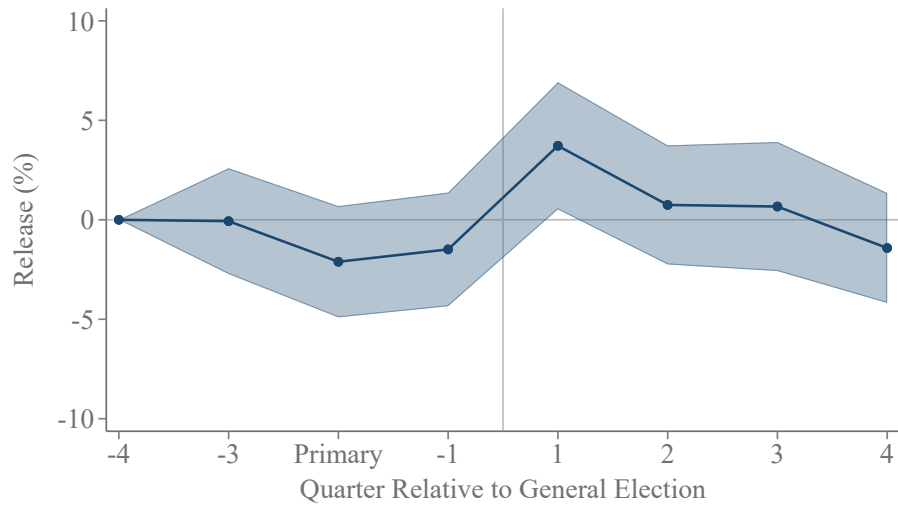
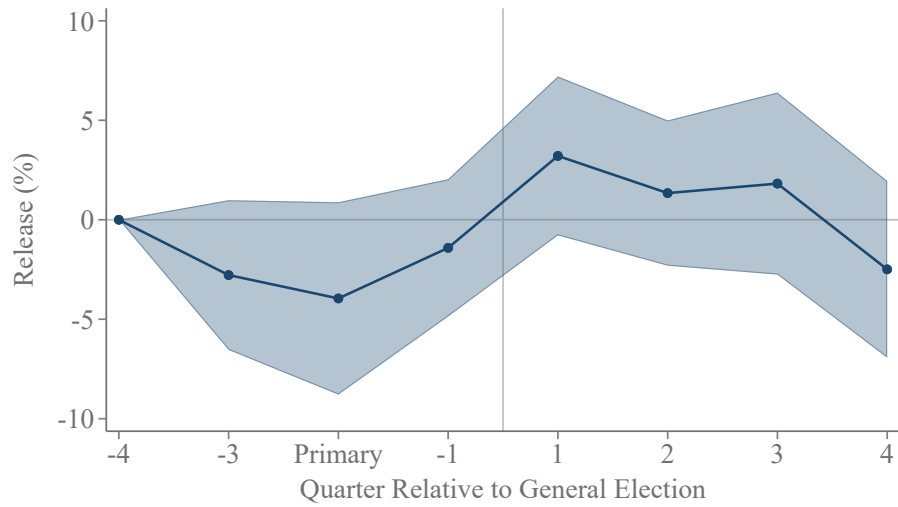
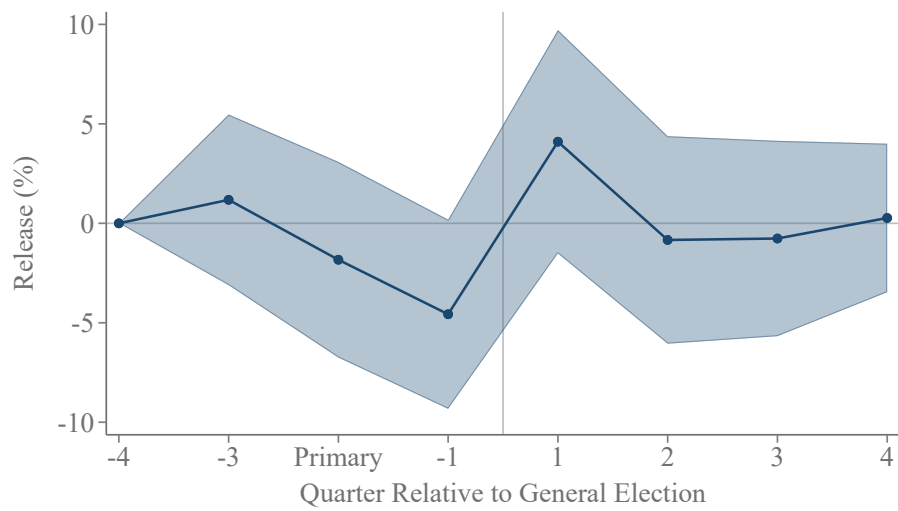


FIGURE A.4. RESULTS WITH ADDITIONAL CONTROLS

Notes: This figure plots difference-in-differences estimates controlling for additional case characteristics and judge fixed effects. See the notes of Figure 1 for additional details.



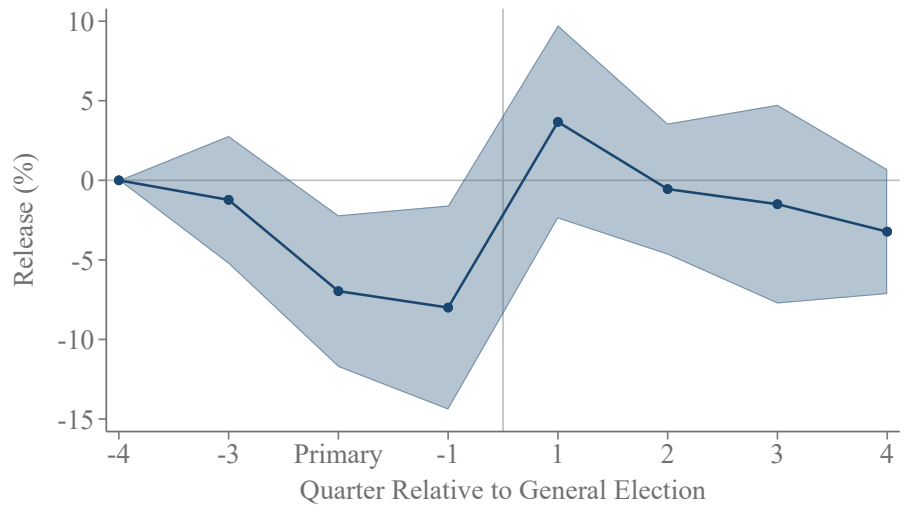
A. White Defendants



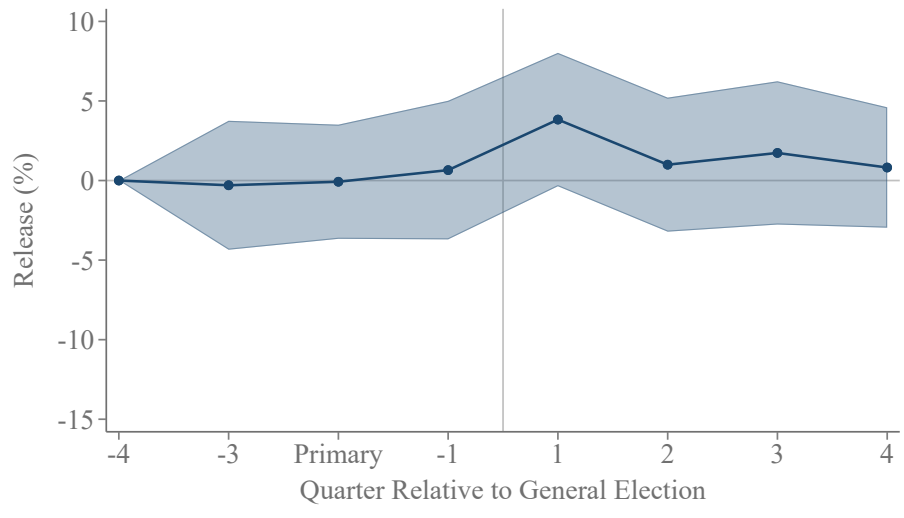
B. Non-White Defendants

FIGURE A.5. RESULTS BY DEFENDANT RACE

Notes: This figure plots difference-in-differences estimates by defendant race. See the notes of Figure 1 for additional details.



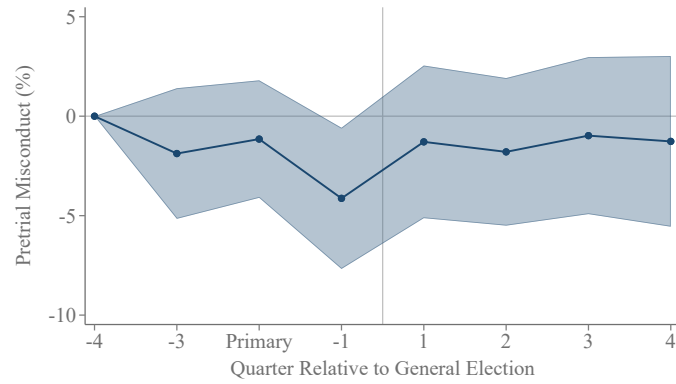
A. Felony Charge



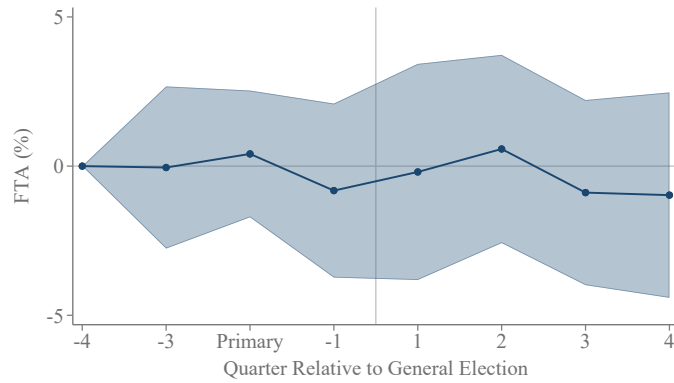
B. Non-Felony Charge

FIGURE A.6. RESULTS BY CHARGE SEVERITY

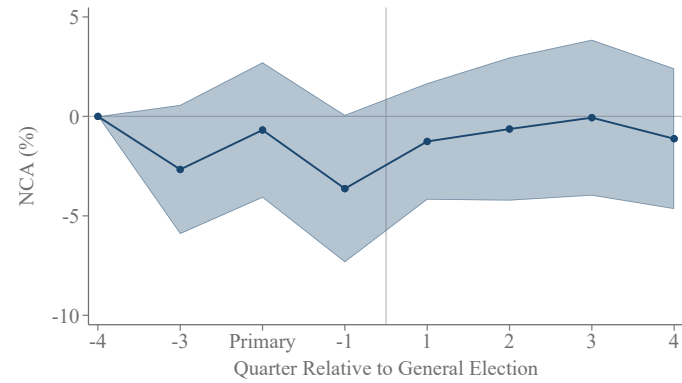
Notes: This figure plots difference-in-differences estimates by charge severity. See the notes of Figure 1 for additional details.



A. Any Pretrial Misconduct



B. FTA



C. NCA

FIGURE A.7. RESULTS FOR PRETRIAL MISCONDUCT

Notes: This figure plots difference-in-differences estimates on unconditional pretrial outcomes. Panel A reports results for any pretrial misconduct, Panel B reports results only for failure to appear for required court appearances and Panel C reports results only for rearrest for new criminal activity. See the notes of Figure 1 for additional details.

TABLE A.1—DESCRIPTIVE STATISTICS

	All Judges	Up for Reelection	Not Up for Reelection
	(1)	(2)	(3)
<i>A. Case Characteristics</i>			
Age at Current Arrest	34.35	34.08	34.44
Age at First Arrest	21.38	21.29	21.41
Prior Arrests	9.79	9.76	9.81
Prior Felonies	1.41	1.41	1.41
Prior Misdemeanors	2.48	2.48	2.47
Pending Charges	0.78	0.82	0.76
Property Charge	0.25	0.25	0.25
Drug Charge	0.29	0.28	0.30
Public Order Charge	0.46	0.46	0.46
Traffic Charge	0.16	0.17	0.16
On Parole/Probation	0.30	0.31	0.30
On Pretrial Release	0.43	0.45	0.43
Person Charge	0.37	0.38	0.37
Felony Charge	0.43	0.43	0.43
Total Charges	3.74	3.85	3.71
Male	0.74	0.74	0.74
White	0.46	0.46	0.46
Recommend Detain	0.20	0.20	0.20
<i>B. Judge Decisions</i>			
Released before Trial	0.84	0.84	0.83
Released if Recommend Detain	0.67	0.68	0.67
Released if Recommend Release	0.88	0.89	0.88
Any Override	0.23	0.23	0.23
Cases	38,953	9,513	29,440
Judges	55	17	38

Notes: This table reports descriptive statistics for our analysis sample. The sample consists of bail hearings assigned to judges between November 1, 2016 and July 31, 2019 as described in the text. Information on case and defendant characteristics and judge decisions is derived from court records as described in the text. Pretrial release is defined as ever being released before case disposition. Column 1 reports statistics for the full sample of cases. Columns 2 reports statistics for cases assigned to judges who faced reelection in 2017, whereas Column 3 reports statistics for cases assigned to judges who were not up for reelection.