

Online Appendix

Do health disparities narrow with pollution disparities?

Trends from California

Danae Hernandez-Cortes and Kyle C. Meng

January 13, 2023

1 Appendix Figures

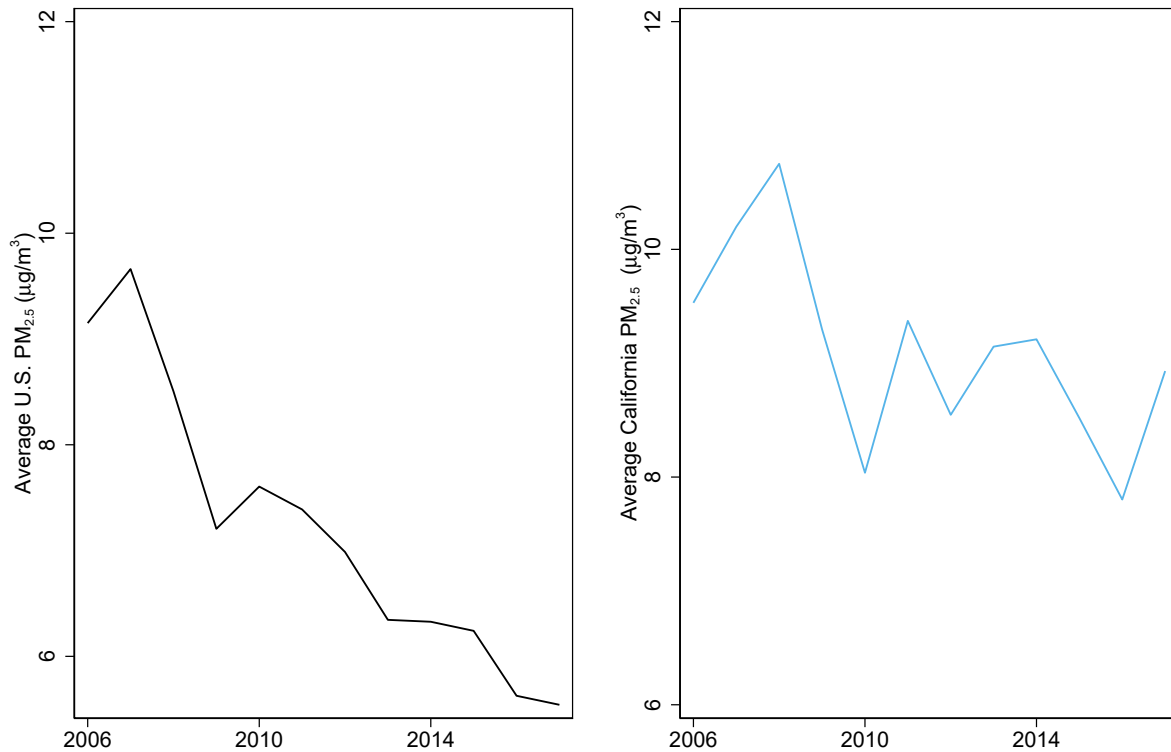


Figure 1: Trends in PM_{2.5} for the average U.S. and California resident

NOTES: PM_{2.5} concentrations for the average U.S. (left) and California (right) resident between 2006-2017.
SOURCE: PM_{2.5} concentrations data from Van Donkelaar et al. (2019).

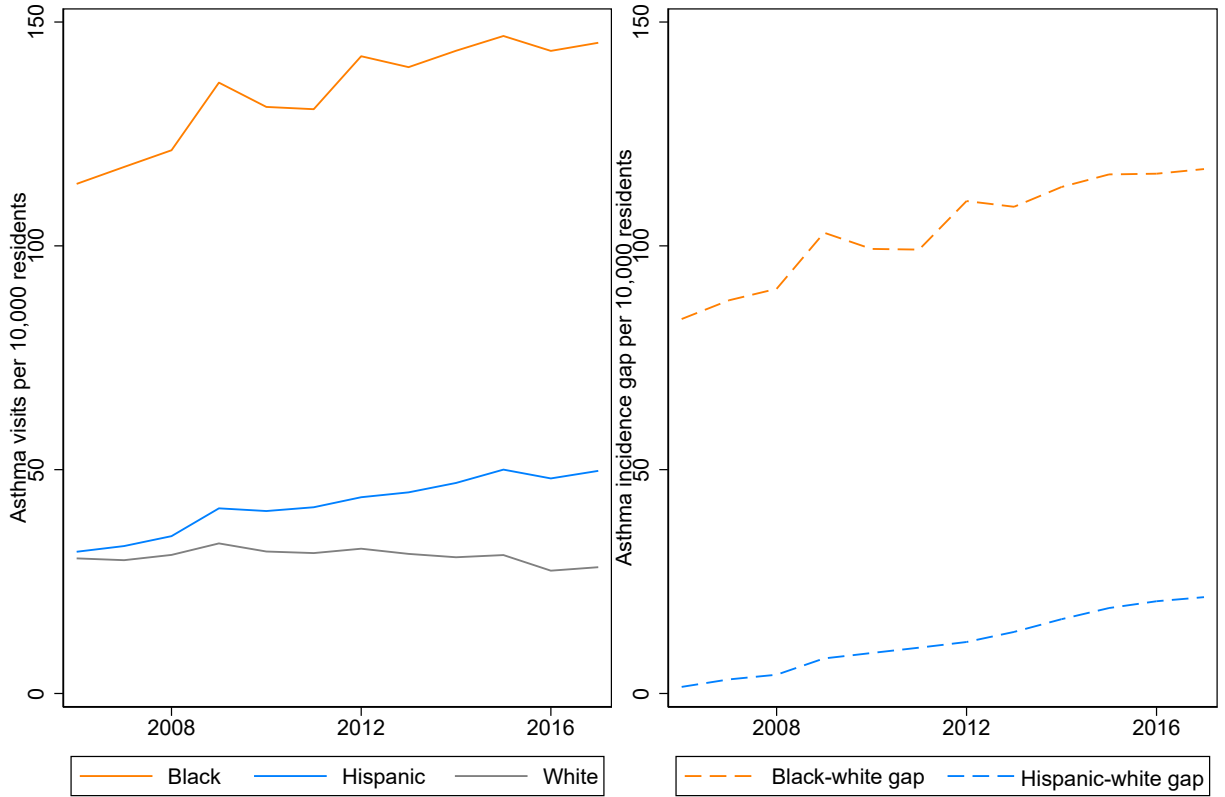


Figure 2: Asthma levels and disparities using 2010 population

NOTES: Left panel plots annual asthma cases per 10,000 residents levels for the average Black, Hispanic, and white individual. Right panel plots annual Black-white and Hispanic-white gaps in asthma cases per 10,000 residents. Calculations based on 2010 zip code level populations.

SOURCE: $PM_{2.5}$ concentrations from Van Donkelaar et al. (2019). Asthma-related ER visits from the California OSHPD. Population data from IPUMS NHGIS.

References

- Van Donkelaar, Aaron, Randall V Martin, Chi Li, and Richard T Burnett. 2019. “Regional estimates of chemical composition of fine particulate matter using a combined geoscience-statistical method with information from satellites, models, and monitors.” *Environmental science & technology*, 53(5): 2595–2611.