

**1918 Every Year: Racial Inequality in Infectious Mortality,
1906–1942
ONLINE APPENDIX**

By JAMES J. FEIGENBAUM, LAUREN HOEHN-VELASCO, CHRISTOPHER MULLER, AND ELIZABETH
WRIGLEY-FIELD

APPENDIX

TABLE A1— CITY CHARACTERISTICS, BY DRA ENTRY

	1900-1909	1910-1919	1920-1929	1930-1939	1940+
	1900 Mean	1900 Mean	1900 Mean	1900 Mean	1900 Mean
Population (1,000s)	5,600.32	1,202.57	783.72	410.73	344.52
% <1	2.08	2.03	2.12	2.12	2.01
% <5	10.15	10.14	10.42	10.71	10.44
% 5-19	28.49	29.37	29.77	30.42	30.76
% 20-44	42.51	43.46	42.12	40.69	39.72
% 45-65	14.68	13.51	13.60	14.28	14.56
% 65+	4.17	3.52	4.08	3.90	4.52
% Female	50.62	49.10	49.33	50.33	50.11
% Reproductive-Age Female	26.30	25.81	25.73	25.74	25.39
% White	95.19	85.45	86.98	88.34	85.58
% In the South	8.58	29.84	34.69	34.13	35.33

Source: IPUMS Restricted Complete-Count Census Microdata.

TABLE A2— CITY CHARACTERISTICS, BY DRA ENTRY AND WHETHER RACIAL CLASSIFICATION REPORTED

	1900-1909	1910-1919	1920-1929	1930-1939	1940+
	1900 Mean	1900 Mean	1900 Mean	1900 Mean	1900 Mean
Has Racial Classification					
Population (1,000s)	9,847.13	1,220.80	820.15	434.71	371.29
% <1	2.12	2.05	2.23	2.11	2.20
% <5	10.27	10.19	10.86	10.76	11.20
% 5-19	28.76	29.83	30.70	30.65	32.10
% 20-44	42.88	42.97	41.80	41.03	38.94
% 45-65	14.30	13.57	12.88	14.00	13.73
% 65+	3.79	3.44	3.77	3.57	4.03
% Female	50.45	49.82	49.71	50.57	51.32
% Reproductive-Age Female	26.41	26.30	26.08	26.16	26.06
% White	91.06	79.03	76.27	81.50	74.78
% In the South	18.23	44.58	68.92	57.00	76.47
No Racial Classification					
Population (1,000s)	1,825.38	1,165.66	746.80	374.93	338.45
% <1	2.05	1.98	2.02	2.14	1.96
% <5	10.04	10.04	9.99	10.65	10.27
% 5-19	28.24	28.42	28.83	30.07	30.46
% 20-44	42.18	44.47	42.46	40.18	39.90
% 45-65	15.03	13.38	14.32	14.71	14.75
% 65+	4.51	3.69	4.40	4.39	4.63
% Female	50.76	47.62	48.94	49.98	49.84
% Reproductive-Age Female	26.20	24.81	25.37	25.12	25.24
% White	98.85	98.43	97.83	98.54	88.02
% In the South	0.00	0.00	0.00	0.00	26.00

Source: IPUMS Restricted Complete-Count Census Microdata.

TABLE A3—CAUSE OF DEATH CLASSIFICATION

Classification	Causes Included
<i>Influenza/Pneumonia (Flu)</i>	Any variant on influenza or pneumonia
<i>Tuberculosis (TB)</i>	All forms of TB, for example “tuberculosis of the lungs,” “tuberculosis of the meninges”
<i>Waterborne and Foodborne</i>	Appendicitis, diarrheal diseases, dysentery, poliomyelitis, typhoid and paratyphoid, and “other diseases of the digestive system”
<i>Other Infectious</i>	Bronchitis, diphtheria, erysipelas, exophthalmic goiter, malaria, measles, meningitis, nephritis/Bright’s disease, pertussis/whooping cough, puerperal fever/puerperal septicemia, scarlet fever, smallpox, syphilis, “all other epidemic diseases” and “all other infective and parasitic diseases”

Notes: Many of the other infectious causes were reported in multiple variants in different years, and not all were reported in all years. In particular, as we note in the article, diarrheal diseases for individuals aged 2 and above were reported as a separate cause of death (vs. included in “all other causes,” which is omitted from the infectious causes here) only before 1910.

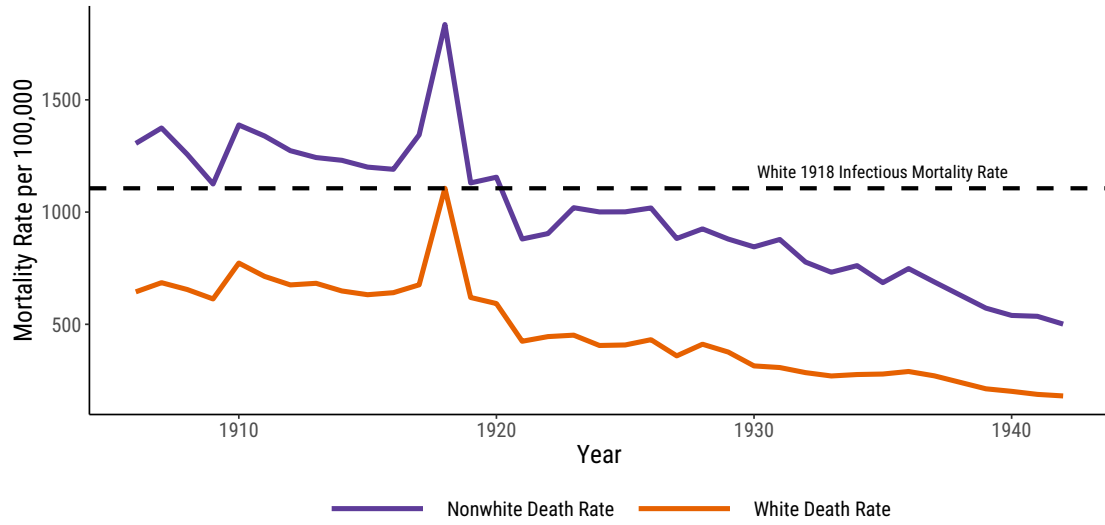
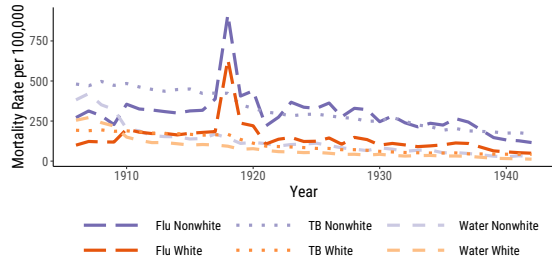


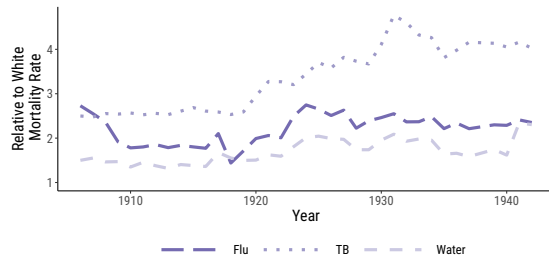
FIGURE A1. INFECTIOUS MORTALITY, NONWHITE AND WHITE AMERICANS

Note: Weighted mean of infectious mortality in U.S. cities. Infectious mortality rates per 100,000.

Source: Mortality data from published volumes of the *Vital Statistics of the United States*.

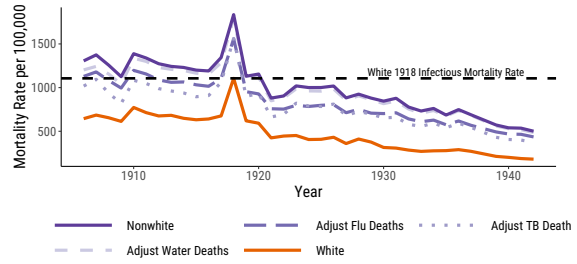


PANEL A: RATE

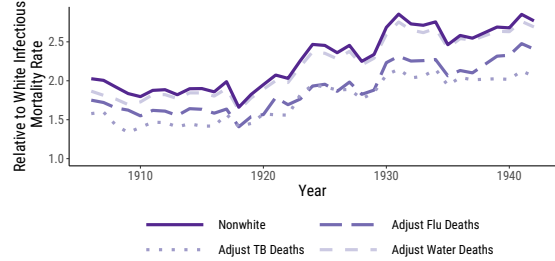


PANEL B: RATIO

FIGURE A2. RACIAL DISPARITY BY CAUSE



PANEL A: RATE



PANEL B: RATIO

FIGURE A3. COUNTERFACTUAL NONWHITE MORTALITY

Note: Weighted means of infectious mortality in U.S. cities. In each Panel A, infectious mortality rates are per 100,000. Each Panel B shows the ratio of nonwhite-to-white mortality. Figure A2 shows the crude rates. Figure A3 considers the counterfactual impact of adjusting each noted cause of nonwhite mortality to the levels of white mortality.
 Source: Mortality data from published volumes of the *Vital Statistics of the United States*.