

Online Appendix  
**Democracy and Aid Donorship**  
*American Economic Journal: Economic Policy*

ANGELIKA J. BUDJAN and ANDREAS FUCHS

**Appendix A1: Survey questions**

**Question 1**

1a. Does your country (currently or in the past) provide development cooperation<sup>1</sup> to any other countries?

yes     no

1b. If yes, when did your country first provide development cooperation to another country?

Year:

Comments (if any):

*—The following questions only apply if you replied yes to question 1a—*

**Question 2**

2a. Does your country currently have (at least) one administrative body that is responsible for providing development cooperation to other countries? This could be a unit or division in the Ministry of Foreign Affairs, another ministry or government unit, or an independent agency.

yes     no

---

<sup>1</sup>“Development cooperation” should be broadly understood as including grants, concessional loans, technical assistance and in-kind assistance the main objective of which is the promotion of the economic development and welfare of another country.

This does NOT include: military equipment or services, anti-terrorism activities or humanitarian aid.

2b. If yes, please name the leading institution(s) and year(s) this responsibility was adopted:

Name(s):

Year(s):

Comments (if any):

### **Question 3**

3a. In the history of your country, did the responsibility of providing development cooperation lay with another administrative body?

yes    no

3b. If yes, please name the leading institution(s) and year(s) this responsibility was adopted:

Name(s):

Year(s):

Comments (if any):

### **Question 4**

4a. Does your country (currently or in the past) have legislation to govern its development co-operation?

yes    no

4b. If yes, what is/are the name(s) of the corresponding law(s) or regulation(s)?

Name(s):

4c. When did your country first introduce legislation to govern its development co-operation?

Year(s):

Comments (if any):

## Appendix A2: Year of aid initiation by country

Country (ISO)	World region	First aid delivery	Year	Source	First aid institution	Year	Source
AFG	SA	No			No		
AGO	SSA	Yes	1976		Yes	2008	
ALB	ECA	No			No		
ARE	MENA	Yes	1970	Web/Literature	Yes	2008	Web/Literature
ARG	LAC	Yes	1992	Web/Literature	Yes	2003	Web/Literature
ARM	ECA	No			No		
AUS	EAP	Yes	1950	Web/Literature	Yes	1974	Web/Literature
AUT	ECA	Yes	1956		Yes	1974	
AZE	ECA	Yes	2011	Web/Literature	Yes	2011	Web/Literature
BEL	ECA	Yes	1962		Yes	1962	
BEN	SSA	Yes	1960		NA		
BFA	SSA	No			No		
BGR	ECA	Yes	1961	Web/Literature	Yes	2007	Web/Literature
BHR	MENA	Yes	NA	Web/Literature	NA		
BIH	ECA	No			No		
BLZ	LAC	No			No		
BRA	LAC	Yes	1969	Web/Literature	Yes	1969	Web/Literature
BRN	EAP	Yes	1985		NA		
BTN	SA	No			No		
CAN	NA	Yes	1950		Yes	1960	
CHE	ECA	Yes	1961		Yes	1961	
CHL	LAC	Yes	1993		Yes	1993	Web/Literature
CHN	EAP	Yes	1950	Web/Literature	Yes	1960	
CIV	SSA	No			No		
COG	SSA	Yes	1960		NA		Web/Literature
COL	LAC	Yes	1982	Web/Literature	Yes	1982	
CRI	LAC	Yes	1997		No		Web/Literature
CUB	LAC	Yes	1959	Web/Literature	NA		
CYP	ECA	Yes	2005	Web/Literature	Yes	2005	
CZE	ECA	Yes	1993	Web/Literature	Yes	2008	
DEU	ECA	Yes	1952		Yes	1961	
DJI	MENA	Yes	1977		Yes	1977	
DNK	ECA	Yes	1962		Yes	1962	
DZA	MENA	Yes	NA	Web/Literature	No		
ECU	LAC	Yes	2006		Yes	2007	

Table continued from previous page

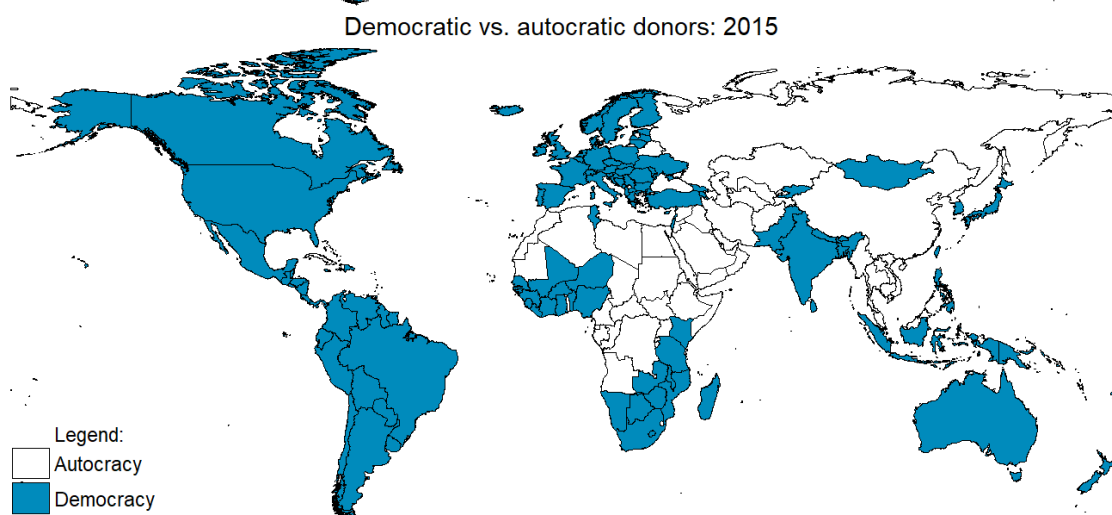
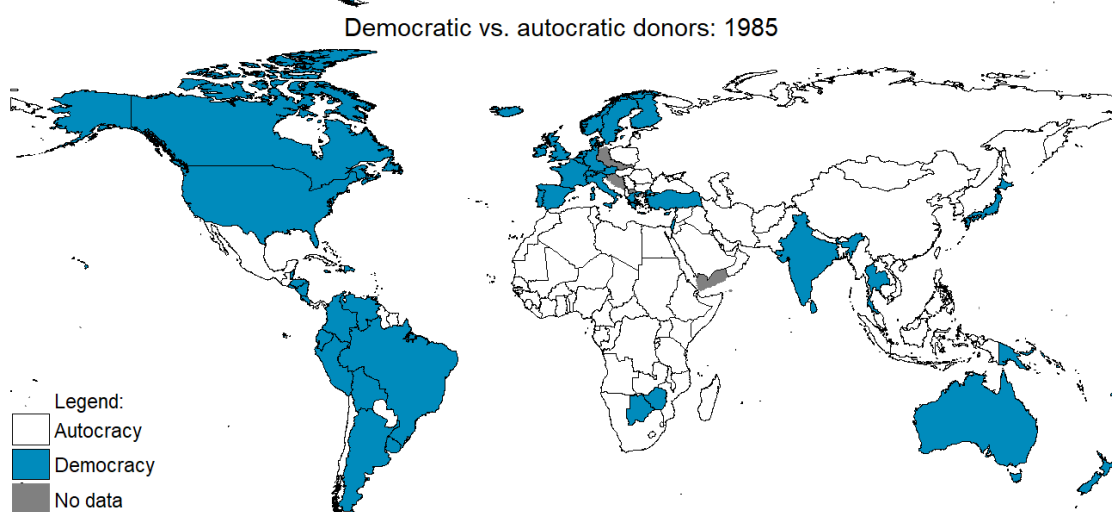
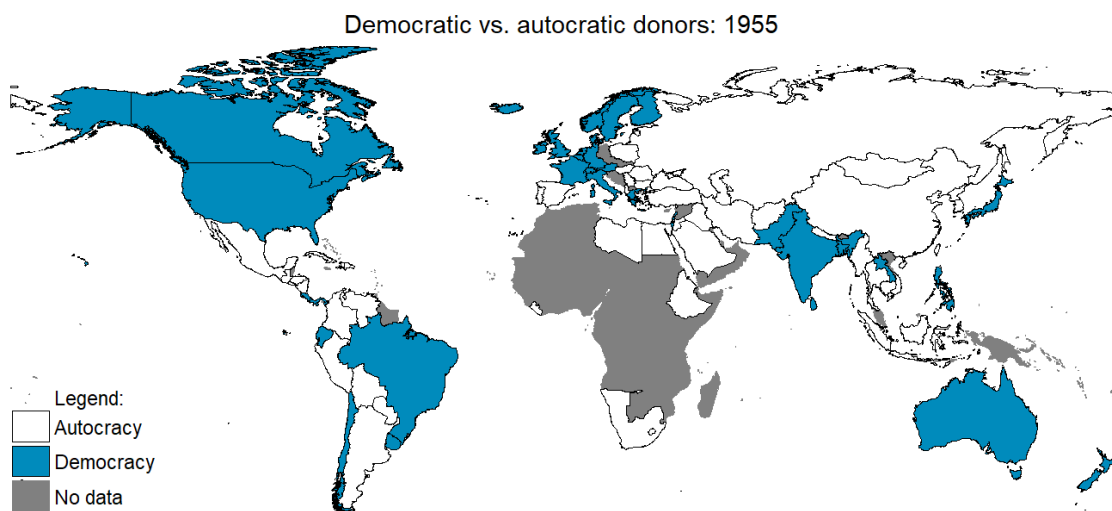
Country (ISO)	World region	First aid delivery	Year	Source	First aid institution	Year	Source
EGY	MENA	Yes	1980		Yes	1980	
ESP	ECA	Yes	1976		Yes	1985	
EST	ECA	Yes	1998		Yes	1998	
FIN	ECA	Yes	1965		Yes	1965	
FRA	ECA	Yes	1959	Web/Literature	Yes	1961	Web/Literature
GBR	ECA	Yes	1961		Yes	1964	
GHA	SSA	No			No		
GIN	SSA	No			No		
GNB	SSA	Yes	1976		No		
GRC	ECA	Yes	1997		Yes	2002	
GTM	LAC	No			No		
GUY	LAC	No			No		
HND	ECA	Yes	2011		Yes	2012	
HRV	ECA	Yes	1993		Yes	2008	
HUN	EAP	Yes	1956	Web/Literature	Yes	1962	Web/Literature
IDN	SA	Yes	1981	Web/Literature	No		Web/Literature
IND	ECA	Yes	1959	Web/Literature	Yes	1964	Web/Literature
IRL	MENA	Yes	1974		Yes	1974	
IRN	MENA	Yes	NA	Web/Literature	Yes	1975	Web/Literature
IRQ	ECA	Yes	1974		Yes	1974	
ISL	MENA	Yes	1980		Yes	1981	
ISR	ECA	Yes	1953	Web/Literature	Yes	1957	
ITA	LAC	Yes	1966		Yes	1987	
JAM	MENA	No			No		
JOR	EAP	No			No		
JPN	ECA	Yes	1954	Web/Literature	Yes	1954	Web/Literature
KAZ	EAP	Yes	2000		Yes	2014	
KOR	ECA	Yes	1963		Yes	1967	
KSV	MENA	No			No		
KWT	MENA	Yes	1962		Yes	1961	
LBY	SA	Yes	1968	Web/Literature	No		
LKA	SSA	Yes	2011		No		Web/Literature
LSO	ECA	No			No		
LTU	ECA	Yes	2001	Web/Literature	Yes	2004	
LUX	ECA	Yes	1982		Yes	1979	
LVA	MENA	Yes	1999		Yes	2003	

Table continued from previous page

Country (ISO)	World region	First aid delivery	Year	Source	First aid institution	Year	Source
MAR	ECA	Yes	1986		Yes	1986	
MDA	SSA	No			No		
MDG	LAC	No			No		
MEX	ECA	Yes	1943		Yes	1971	
MKD	ECA	Yes	2012		No		Web/Literature
MLT	EAP	Yes	2008		Yes	2008	
MNG	SSA	Yes	2013		Yes	2013	
MWI	EAP	No			No		
MYS	SSA	Yes	1980		Yes	1980	Web/Literature
NAM	SSA	No			No		
NGA	ECA	Yes	1976	Web/Literature	Yes	1976	Web/Literature
NLD	ECA	Yes	1949		Yes	1965	
NOR	SA	Yes	1953		Yes	1952	
NPL	EAP	No			No		
NZL	SA	Yes	1951		Yes	2002	
PAK	LAC	Yes	NA	Web/Literature	Yes	NA	
PER	EAP	Yes	NA		Yes	2002	
PHL	ECA	Yes	1979		Yes	1979	
POL	ECA	Yes	1956	Web/Literature	Yes	2005	
PRT	LAC	Yes	1961		Yes	1974	
PRY	MENA	Yes	2014		No		Web/Literature
QAT	ECA	Yes	1974	Web/Literature	Yes	2008	Web/Literature
ROU	ECA	Yes	1956	Web/Literature	Yes	NA	Web/Literature
RUS	MENA	Yes	1953	Web/Literature	Yes	1957	Web/Literature
SAU	EAP	Yes	1966	Web/Literature	Yes	1974	Web/Literature
SGP	LAC	Yes	1992	Web/Literature	Yes	1992	Web/Literature
SLV	SSA	Yes	2013		Yes	2009	
SSD	ECA	Yes	2011		Yes	2011	
SVK	ECA	Yes	1999	Web/Literature	Yes	2003	
SVN	ECA	Yes	2004		Yes	2006	
SWE	SSA	Yes	1962		Yes	1965	
TCD	SSA	No			No		
TGO	EAP	No			No		
THA	EAP	Yes	1992		Yes	2004	
TLS	MENA	Yes	2014	Web/Literature	NA		
TUN	ECA	Yes	1972		Yes	1972	
TUR	SSA	Yes	1985	Web/Literature	Yes	1992	
TZA	NA	No			No		
URY	LAC	Yes	2009	Web/Literature	Yes	2010	Web/Literature
USA	EAP	Yes	1950	Web/Literature	Yes	1955	
VEN	MENA	Yes	2005	Web/Literature	Yes	2015	
VNM	SSA	Yes	NA		No		
YEM	SA	No			No		
ZAF	SSA	Yes	1968	Web/Literature	Yes	1968	Web/Literature

*Notes:* See Section 1 for a detailed description of the data-gathering process. The world regions are abbreviated as follows: Sub-Saharan Africa (SSA), East Asia and Pacific (EAP), Europe and Central Asia (ECA), Latin America and the Caribbean (LAC), the Middle East and North Africa (MENA), and South Asia (SA).

## Appendix A3: World maps of democracy (1955, 1985 and 2015)



*Note:* See Section 2 for a detailed definition of the democracy variable. Country boundaries were constructed using the Cshapes dataset (Weidmann, Kruse and Gleditsch 2010, 2016).

## Appendix A4: Correlation matrix

Variable name	1	2	3	4	5	6	7	8	9	10	11	12	13	14	15	16	17	18	19	20	21	22	23
1 Aid donorship (broad definition)	1																						
2 Aid donorship (narrow definition)	0.57	1																					
3 Cold War	-0.01	-0.01	1																				
4 (log) Colony population	0.09	0.09	0.16	1																			
5 Democracy (baseline)	0.05	0.05	-0.24	0.07	1																		
6 Democracy (DD)	0.06	0.06	-0.16	0.07	0.86	1																	
7 Democracy (electoral democracy)	0.08	0.09	-0.28	0.10	0.81	0.78	1																
8 Democracy (ethnic)	0.02	0.03	-0.06	0.10	0.27	0.24	0.35	1															
9 Democracy (instrument)	0.07	0.07	-0.35	0.10	0.61	0.61	0.61	0.26	1														
10 Democracy (Polity IV)	0.06	0.07	-0.27	0.10	0.89	0.80	0.88	0.28	0.62	1													
11 Democracy (winning coalition)	0.06	0.08	-0.12	0.12	0.76	0.70	0.78	0.29	0.50	0.80	1												
12 Duration	0.01	0.02	-0.55	-0.02	0.20	0.17	0.20	0.03	0.29	0.24	0.06	1											
13 (log) GDP per capita	0.10	0.11	-0.08	0.14	0.29	0.33	0.43	0.27	0.35	0.28	0.35	0.02	1										
14 Government share of GDP	0	0	-0.04	-0.09	-0.05	-0.11	-0.03	-0.05	-0.09	-0.08	-0.07	-0.12	0.08	1									
15 Intrastate conflict over territory	0.06	0.04	-0.03	0.03	-0.02	-0.01	-0.03	-0.02	-0.01	-0.02	-0.05	0.08	-0.09	-0.07	1								
16 Militarized interstate dispute	0.02	0.03	0.06	0.11	-0.01	0.02	-0.03	-0.04	0.02	-0.03	-0.01	-0.02	0.01	-0.00	0.07	1							
17 Openness	0	0.02	-0.26	-0.19	0.12	0.06	0.13	0.05	0.15	0.12	0.12	0.02	0.33	0.22	-0.10	-0.16	1						
18 Political distance to Russia	0.02	0.03	0.64	0.32	-0.05	0.03	-0.03	0.02	-0.09	-0.01	0.09	-0.47	0.08	-0.16	-0.02	0.00	-0.24	1					
19 Political distance to US	-0.06	-0.07	-0.50	-0.32	-0.15	-0.22	-0.15	-0.12	-0.11	-0.18	-0.25	0.48	-0.18	0.15	0.08	-0.02	0.15	-0.79	1				
20 (log) Population	0.04	0.05	-0.05	0.22	-0.04	-0.02	-0.04	-0.03	-0.04	0.02	0.01	0.24	-0.29	-0.23	0.27	0.16	-0.49	0.02	0.01	1			
21 Donor spatial lag (by geographic distance)	0.05	0.07	-0.60	-0.09	0.11	0.04	0.13	0.01	0.20	0.08	0	0.45	0.16	0.13	0.09	0	0.18	-0.59	0.43	0.17	1		
22 Donor spatial lag (by democracy peer group)	0.05	0.06	-0.31	-0.02	0.18	0.14	0.17	0	0.30	0.16	0.09	0.35	0.27	0.03	0.12	0.07	0.21	-0.31	0.25	0.03	0.53	1	
23 GDP spatial lag (by geographic distance)	0.03	0.05	-0.59	-0.09	0.07	0	0.08	0.01	0.15	0.01	-0.07	0.53	0.17	0.14	0.07	-0.01	0.13	-0.60	0.55	0.15	0.82	0.47	1
24 GDP spatial lag (by democracy peer group)	0.09	0.11	-0.16	0.17	0.29	0.32	0.29	0.14	0.50	0.22	0.23	0.13	0.62	0.02	-0.05	0.14	0.17	-0.03	-0.12	-0.09	0.40	0.46	0.37

*Note:* The correlation matrix is based on the estimation sample of Table 2, column 6.

## Appendix A5: List of variables

Variable	Definition	Source
<i>Dependent variables</i>		
Aid donorship (broad definition)	1 in the first year in which a country has provided development assistance to another country	Own construction (see Section 1)
Aid donorship (narrow definition)	1 in the year during which the first administrative body has been established whose main responsibility is the management of outgoing development assistance	Own construction (see Section 1)
(log) Aid disbursements (OECD)	Log of total annual aid disbursements at constant 2017 US\$	Creditor Reporting System (OECD 2019)
(log) Aid commitments (AidData)	Log of total annual aid disbursements at constant 2011 US\$	AidData Core Research Release version 3.1 (Tierney et al. 2011, AidData 2017)
<i>Explanatory variables: baseline model</i>		
Democracy (baseline)	1 if the country is coded as a democracy in a year	Polity IV Project (Marshall et al. 2016); Freedom House 2016; Cheibub et al. (2010), updated in Bjørnskov and Rode (2020); manual corrections as in Acemoglu et al. (2019)
(Log) GDP per capita	Log of real GDP per capita at constant 2005 US\$	Penn World Tables 9.0 (Feenstra et al., 2015, 2019)
Government share of GDP	Ratio of government expenditure relative to total GDP	Penn World Tables 9.0 (Feenstra et al. 2015, 2019)
Political distance to US	Ideal point distance to the United States based on voting alignment in the United Nations General Assembly	Voeten et al. (2009), Bailey et al. (2015)
(Log) Population	Log of total population size (in millions)	Penn World Tables 9.0 (Feenstra et al. 2015, 2019)
Openness	Trade dependence of an economy measured as the sum of total exports and imports as a percentage of GDP at current national prices	Penn World Tables 9.0 (Feenstra et al. 2015, 2019)
Intrastate conflict over territory	1 if a country is involved in a territorial dispute as target or as challenger in a year	Gleditsch et al. (2002); Themnér and Wallensteen (2013)



Duration	Duration count measuring the years since entering the sample (i.e., since the end of the Second World War or since independence)	Correlates of War Database (Correlates of War Project 2017)
<i>Explanatory variables: extensions</i>		
Democracy (Polity IV)	Discrete ordinal score of a country's regime type on a democracy-autocracy scale based on an evaluation of that state's elections for competitiveness and openness, the nature of political participation in general, and the extent of checks on executive authority, normalized between 0 and 1	Polity IV Project (Marshall et al. 2016)
Democracy (DD)	1 if the country is coded as a democracy in a year	Cheibub et al. (2010), updated in Bjørnskov and Rode (2020)
Democracy (winning coalition)	Five-points measure based on scores for regime type, the competitiveness of executive recruitment, the openness of executive recruitment, and the competitiveness of participation, normalized between 0 and 1	Polity IV Project (Marshall et al. 2016); CNTS Data Archive (Banks and Wilson 2016)
Democracy (ethnic winning coalition)	Size of winning coalition based on ethnic groups with access to power, normalized between 0 and 1	Bormann et al. (2017)
Democracy (electoral democracy)	Index indicator that measures the value of making ruler responsive to citizens through the electoral system, normalized between 0 and 1	V-Dem (Coppedge et al. 2016)
Political distance to Russia	Ideal point distance to the Soviet Union/Russia based on voting alignment in the United Nations General Assembly	Voeten et al. (2009), Bailey et al. (2015)
Cold War	1 if year is prior to 1991	Own construction
Militarized interstate dispute	1 if a country is engaged in a militarized interstate dispute in a year	Correlates of War Militarized Interstate Disputes (v4.1) (Maoz et al. 2019; Palmer et al. 2020)
(Log) Colony population	Log of total population living in former colonies, computed based on data on colonial linkages, population data, and state independence (by state system membership)	CEPII (Mayer and Zignago 2011); Correlates of War Project (2011); Penn World Tables 9.0 (Feenstra et al. 2015, 2019)

*Note:* When calculating the natural logarithm of colony population, we added 1 to generate only non-negative values.

## Appendix B1: Democracy, income, and aid donorship (1951–2015, first-stage regression results of Table 2)

	(1) Model 2	(2) Model 4	(3) Model 4	(4) Model 6	(5) Model 6	(6) Model 8	(7) Model 8
	Democracy	Democracy	Democracy #(log) GDP per capita	Democracy	Democracy #(log) GDP per capita	Democracy	Democracy #(log) GDP per capita
Democracy (Instrument)	0.3543 (0.0746)	1.1246 (0.6042)	4.4047 (4.7293)	1.3722 (0.5937)	6.5732 (4.6600)	0.8321 (0.6056)	1.6701 (4.7006)
(log) GDP per capita	-0.0009 (0.0502)	0.0464 (0.0676)	0.5604 (0.5552)	0.0435 (0.0670)	0.5390 (0.5478)	0.0010 (0.0689)	0.1464 (0.5558)
Democracy (instrument) # (log) GDP per capita		-0.0948 (0.0708)	-0.1999 (0.5611)	-0.1229 (0.0695)	-0.4521 (0.5498)	-0.0549 (0.0716)	0.1695 (0.5604)
Control variables	No	No	No	Yes	Yes	Yes	Yes
Country and year FE	Yes	Yes	Yes	Yes	Yes	Yes	Yes
Duration dependence	Yes	Yes	Yes	Yes	Yes	Yes	Yes
Number of observations	5,377	5,377	5,377	5,193	5,193	4,658	4,658
Number of countries	145	145	145	140	140	126	126

*Notes:* The dependent variable of the first-stage regression is indicated in the column header. Results of control variables are not displayed. Standard errors are clustered at the country level and reported in parentheses.

## Appendix B2: Democracy, income, and aid donorship (1951–2015, democracy measures)

	(1)	(2)	(3)	(4)	(5)	(6)
	Narrow definition			Broad definition		
	Baseline	Polity IV	DD	Baseline	Polity IV	DD
<i>Panel A. Average effect of democracy</i>						
Indicator	-0.0086	-0.0171	0.0045	0.0057	-0.0429	0.0212
	(0.0242)	(0.0311)	(0.0224)	(0.0249)	(0.0314)	(0.0210)
(log) GDP per capita	0.0102	0.0098	0.0128	0.0124	0.0097	0.0159
	(0.0052)	(0.0057)	(0.0051)	(0.0058)	(0.0068)	(0.0056)
Control variables	Yes	Yes	Yes	Yes	Yes	Yes
Country and year FE	Yes	Yes	Yes	Yes	Yes	Yes
Duration dependence	Yes	Yes	Yes	Yes	Yes	Yes
Number of observations	5,193	4,953	5,139	4,658	4,449	4,604
Number of countries	140	134	139	126	121	125
Kleibergen-Paap F-stat	28.32	34.01	42.17	25.25	34.34	39.11
<i>Panel B. Heterogeneous effect of democracy</i>						
Indicator	-0.4580	-0.3446	-0.5751	-0.3123	-0.1822	-0.3033
	(0.1274)	(0.1541)	(0.1654)	(0.1034)	(0.1123)	(0.1324)
Indicator	0.0580	0.0422	0.0699	0.0408	0.0180	0.0389
# (log) GDP per capita	(0.0178)	(0.0212)	(0.0202)	(0.0142)	(0.0156)	(0.0161)
(log) GDP per capita	-0.0144	-0.0119	-0.0186	-0.0047	0.0006	-0.0016
	(0.0089)	(0.0114)	(0.0103)	(0.0080)	(0.0098)	(0.0086)
Control variables	Yes	Yes	Yes	Yes	Yes	Yes
Country and year FE	Yes	Yes	Yes	Yes	Yes	Yes
Duration dependence	Yes	Yes	Yes	Yes	Yes	Yes
Observations	5,193	4,953	5,139	4,658	4,449	4,604
Number of cid	140	134	139	126	121	125
Kleibergen-Paap F-stat	11.76	11.05	17.64	13.10	15.14	19.40

*Notes:* The dependent variable in columns 1–3 follows our narrow definition of aid donorship. It is a binary variable that takes a value of one in the year a country establishes its first aid institution. The dependent variable in columns 4–6 follows our broad definition of aid donorship. It is a binary variable that takes a value of one in the year a country provides its first outgoing aid project. All specifications are 2SLS regressions with each democracy indicator instrumented by regional waves of democracy according to the respective indicator as described in the main text for our main specification. Peer groups for the Polity IV democracy indicator and the DD indicator are determined using values of that respective indicator at the beginning of the sample period. All regressions include all control variables as in column 5–8 of Table 2. Results of control variables are not displayed. Standard errors are clustered at the country level and reported in parentheses.

### Appendix B3: Democracy, income, and aid donorship (1951–2015, robustness tests)

	(1)	(2)	(3)	(4)	(5)	(6)
	Baseline		Limited dataset		3-year averages	
	OLS FE	2SLS FE	OLS FE	2SLS FE	OLS FE	2SLS FE
Democracy	-0.0771 (0.0350)	-0.4580 (0.1274)	-0.1307 (0.0677)	-0.7495 (0.2268)	-0.2810 (0.1145)	-0.9165 (0.3861)
(log) GDP per capita	0.0059 (0.0051)	-0.0144 (0.0089)	0.0167 (0.0122)	-0.0178 (0.0180)	0.0142 (0.0150)	-0.0157 (0.0265)
Democracy # (log) GDP per capita	0.0088 (0.0045)	0.0580 (0.0178)	0.0147 (0.0083)	0.0945 (0.0306)	0.0326 (0.0147)	0.1087 (0.0545)
Control variables	Yes	Yes	Yes	Yes	Yes	Yes
Country FE and year FE	Yes	Yes	Yes	Yes	Yes	Yes
Duration dependence	Yes	Yes	Yes	Yes	Yes	Yes
Number of observations	5,300	5,193	3,259	3,223	1,658	1,539
Number of countries	141	140	95	95	140	136
R-squared	0.0408		0.0597		0.0841	
Kleibergen-Paap		11.76		9.979		8.155

*Note:* The dependent variable is a binary variable that takes a value of one in the year a country establishes its first aid institution (narrow definition). All regressions include all control variables as in column 5–8 of Table 2. Standard errors are clustered at the country level and reported in parentheses.

## Appendix B4: Democracy, income, and aid donorship (1951–2015, additional control variables)

	(1)	(2)	(3)	(4)	(5)	(6)	(7)	(8)
	OLS FE	2SLS FE	OLS FE	2SLS FE	OLS FE	2SLS FE	OLS FE	2SLS FE
Democracy	-0.0752 (0.0352)	-0.4795 (0.1398)	-0.0752 (0.0353)	-0.4580 (0.1274)	-0.0750 (0.0353)	-0.4585 (0.1280)	-0.0779 (0.0333)	-0.4694 (0.1148)
(log) GDP per capita	0.0060 (0.0052)	-0.0156 (0.0097)	0.0066 (0.0053)	-0.0144 (0.0089)	0.0066 (0.0053)	-0.0144 (0.0089)	0.0069 (0.0054)	-0.0147 (0.0085)
Democracy # (log) GDP per capita	0.0085 (0.0045)	0.0610 (0.0198)	0.0085 (0.0045)	0.0580 (0.0178)	0.0085 (0.0045)	0.0581 (0.0179)	0.0091 (0.0043)	0.0601 (0.0160)
Political distance to Russia	-0.0017 (0.0043)	0.0038 (0.0057)						
Cold War dummy			0.1472 (1.0784)	0.0831 (0.4043)				
Militarized interstate dispute					0.0006 (0.0059)	-0.0021 (0.0067)		
(log) Colony population							0.0483 (0.0203)	0.0477 (0.0192)
Control variables	Yes	Yes	Yes	Yes	Yes	Yes	Yes	Yes
Country FE and year FE	Yes	Yes	Yes	Yes	Yes	Yes	Yes	Yes
Duration dependence	Yes	Yes	Yes	Yes	Yes	Yes	Yes	Yes
Number of observations	5,300	5,193	5,193	5,193	5,193	5,193	4,941	4,941
Number of countries	141	140	140	140	140	140	134	134
R squared	0.0408		0.0415		0.0415		0.0436	
Kleibergen-Paap F-stat		11.39		11.76		11.66		12.68

*Notes:* The dependent variable is a binary variable that takes a value of one in the year a country establishes its first aid institution (narrow definition). All regressions include all control variables as in column 5–8 of Table 2. Standard errors are clustered at the country level and reported in parentheses.

## Appendix B5: Democracy, income, and aid donorship (1951–2015, without EU accession countries)

	(1)	(2)	(3)	(4)	(5)	(6)	(7)	(8)
	OLS FE	2SLS FE	OLS FE	2SLS FE	OLS FE	2SLS FE	OLS FE	2SLS FE
	Narrow	Narrow	Narrow	Narrow	Narrow	Narrow	Broad	Broad
Democracy	-0.0057	-0.0097	-0.0487	-0.3035	-0.0543	-0.3669	-0.0210	-0.2449
	(0.0031)	(0.0276)	(0.0322)	(0.0988)	(0.0355)	(0.1280)	(0.0335)	(0.1073)
(log) GDP per capita	0.0116	0.0120	0.0094	-0.0037	0.0062	-0.0099	0.0100	-0.0010
	(0.0047)	(0.0051)	(0.0048)	(0.0068)	(0.0052)	(0.0081)	(0.0062)	(0.0076)
Democracy # (log) GDP per capita			0.0054	0.0384	0.0062	0.0471	0.0016	0.0335
			(0.0042)	(0.0143)	(0.0046)	(0.0180)	(0.0044)	(0.0151)
Government share of GDP					-0.0283	-0.0175	-0.0227	-0.0136
					(0.0190)	(0.0214)	(0.0164)	(0.0194)
Political distance to USA					-0.0114	-0.0136	-0.0087	-0.0109
					(0.0040)	(0.0044)	(0.0046)	(0.0053)
(log) Population					-0.0185	-0.0016	-0.0399	-0.0311
					(0.0221)	(0.0222)	(0.0147)	(0.0136)
Openness					0.0031	0.0097	0.0003	0.0037
					(0.0051)	(0.0063)	(0.0050)	(0.0062)
Intrastate conflict over territory					0.0179	0.0229	0.0056	0.0142
					(0.0162)	(0.0172)	(0.0175)	(0.0179)
Country and year FE	Yes	Yes	Yes	Yes	Yes	Yes	Yes	Yes
Duration dependence	Yes	Yes	Yes	Yes	Yes	Yes	Yes	Yes
Number of observations	5,103	4,991	5,103	4,991	4,920	4,824	4,435	4,339
Number of countries	130	128	130	128	124	123	115	111
R-squared	0.0380		0.0383		0.0390		0.0438	
Kleibergen-Paap		18.95		8.197		8.247		9.989

*Notes:* The dependent variable in columns 1–6 is a binary variable that takes a value of one in the year a country establishes its first aid institution (narrow definition). The dependent variable in columns 7–8 is a binary variable that takes a value of one in the year of undertaking the very first activity of development aid (broad definition). Standard errors are clustered at the country level and reported in parentheses.

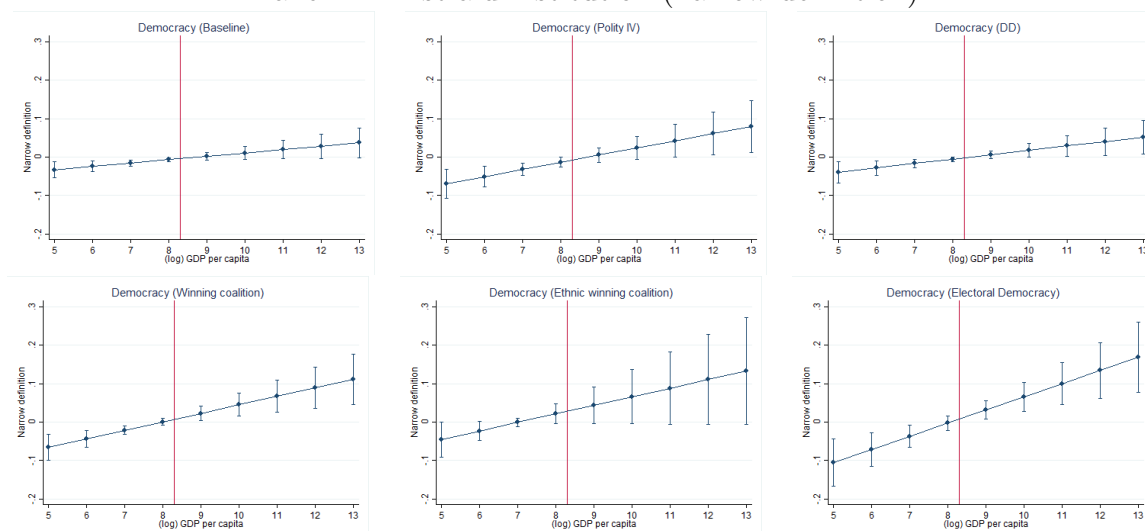
## Appendix B6: Democracy, income, and aid budgets (1971–2013/2015)

	(1) (log) Aid disbursements (OECD)	(2) (log) Aid commitments (AidData)
Democracy	-25.7117 (9.9836)	-28.3149 (8.0594)
(log) GDP per capita	1.0001 (0.8158)	0.4686 (0.8109)
Democracy # (log) GDP per capita	2.6357 (1.0505)	2.9780 (0.8577)
Country and year FE	Yes	Yes
Control variables	Yes	Yes
Duration dependence	Yes	Yes
Sample period	1971–2015	1971–2013
Number of observations	1,344	977
Number of countries	46	44
R-squared	0.6002	0.4536

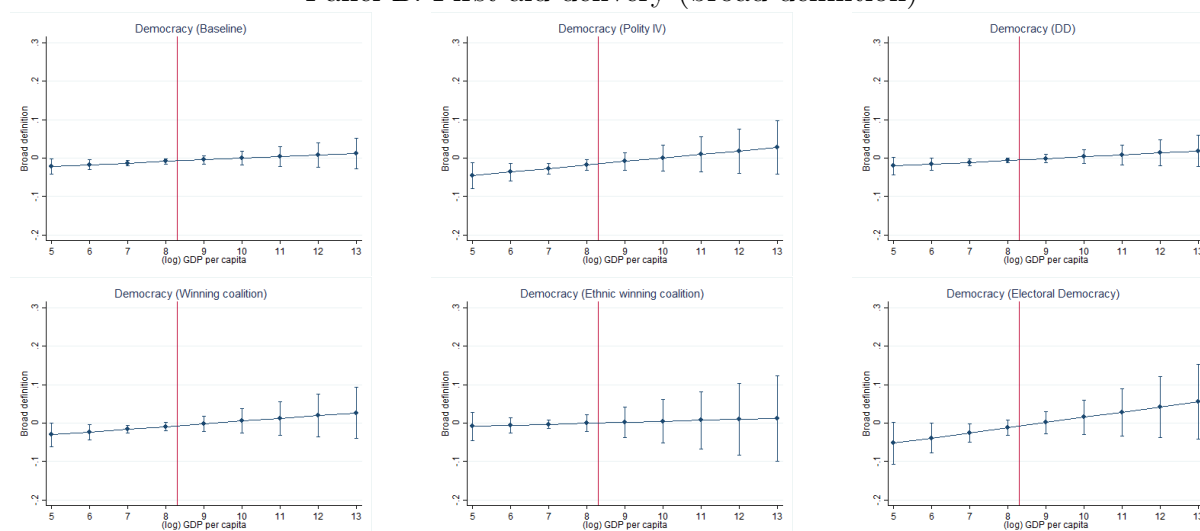
*Notes:* The dependent variable is one of two alternative measures of donor aid budgets. Column 1 uses annual aid disbursements reported in the OECD-DAC database, and column 2 uses AidData’s Core Research Release database on annual aid commitments. Regressions include all control variables as in columns 5–8 of Table 2. Results of control variables are not displayed. Standard errors are clustered at the country level and reported in parentheses. The sample in column 1 contains the following countries: Australia, Austria, Azerbaijan, Belgium, Bulgaria, Canada, Croatia, Cyprus, Czech Republic, Denmark, Estonia, Finland, France, Germany, Greece, Hungary, Iceland, Ireland, Israel, Italy, Japan, Kazakhstan, Kuwait, Latvia, Lithuania, Luxembourg, Malta, Netherlands, New Zealand, Norway, Poland, Republic of Korea, Romania, Russian Federation, Saudi Arabia, Slovakia, Slovenia, Spain, Sweden, Switzerland, Thailand, Turkey, United Arab Emirates, United Kingdom, and United States. The sample in column 2 contains the following countries: Australia, Austria, Belgium, Brazil, Canada, Chile, Colombia, Cyprus, Czech Republic, Denmark, Estonia, Finland, France, Germany, Greece, Hungary, Iceland, India, Ireland, Italy, Japan, Kuwait, Latvia, Lithuania, Luxembourg, Netherlands, New Zealand, Norway, Poland, Qatar, Republic of Korea, Romania, Saudi Arabia, Slovakia, Slovenia, South Africa, Spain, Sweden, Switzerland, Thailand, United Arab Emirates, United Kingdom, and United States.

## Appendix B7: Marginal effect of alternative democracy measures on aid donorship across income levels

Panel A: First aid institution (narrow definition)



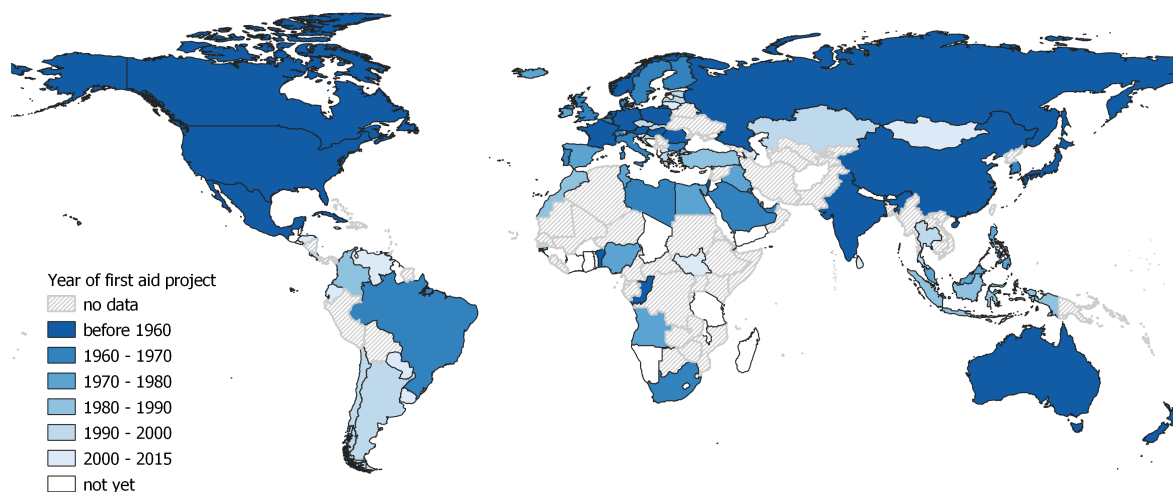
Panel B: First aid delivery (broad definition)



*Notes:* The figure displays the marginal effects of democracy on a country's likelihood to become an aid donor (upper panel using the narrow definition; lower panel using the broad definition) at different levels of per-capita income based on fixed-effects regressions. Each subfigure uses one of six measures of democracy, as indicated in its header. The figure also displays 90% confidence intervals. The vertical lines indicate the sample median of per-capita income.



## Appendix C1: Year of first outgoing aid project by country (1950–2015)



*Source:* Authors' dataset (see text and appendix for details). Country boundaries were constructed using the Cshapes dataset (Weidmann, Kuse and Gleditsch 2010, Weidmann and Gleditsch 2016).

**Appendix C2: Democracy, income, and aid donorship (1951-2015, controlled for spatial lags,  
broad definition)**

	(1)	(2)	(3)	(4)	(5)	(6)	(7)	(8)
	OLS FE	2SLS	OLS FE	2SLS	OLS FE	2SLS	OLS FE	2SLS
Democracy	-0.0460	-0.3146	-0.0477	-0.2844	-0.0419	-0.3123	-0.0346	-0.3085
	(0.0332)	(0.1070)	(0.0340)	(0.1037)	(0.0333)	(0.1038)	(0.0350)	(0.1043)
(log) GDP per capita	0.0103	-0.0043	0.0116	0.0008	0.0103	-0.0047	0.0064	-0.0086
	(0.0065)	(0.0081)	(0.0066)	(0.0074)	(0.0064)	(0.0080)	(0.0059)	(0.0079)
Democracy # (log) GDP per capita	0.0047	0.0412	0.0048	0.0345	0.0041	0.0408	0.0033	0.0406
	(0.0044)	(0.0145)	(0.0045)	(0.0135)	(0.0044)	(0.0143)	(0.0046)	(0.0143)
Donor spatial lag (by geographic distance)	0.2573	0.2845						
	(0.0832)	(0.0860)						
Donor spatial lag (by democracy peer group)			0.0113	0.0041				
			(0.0107)	(0.0107)				
GDP spatial lag (by geographic distance)					-0.0038	0.0001		
					(0.0182)	(0.0190)		
GDP spatial lag (by democracy peer group)							0.0212	0.0201
							(0.0111)	(0.0098)
Control variable	Yes	Yes	Yes	Yes	Yes	Yes	Yes	Yes
Country FE and year FE	Yes	Yes	Yes	Yes	Yes	Yes	Yes	Yes
Duration dependence	Yes	Yes	Yes	Yes	Yes	Yes	Yes	Yes
Number of observations	4,660	4,658	4,545	4,543	4,660	4,658	4,596	4,594
Number of countries	128	126	124	122	128	126	126	124
R squared	0.0440		0.0414		0.0413		0.0421	
Kleibergen-Paap F-stat		13.55		10.83		12.77		15.94

*Notes:* The dependent variable is a binary variable that takes a value of one in the year a country provides its first out-going aid project (broad definition). All regressions include all control variables as in columns 5–8 of Table 2. Standard errors are clustered at the country level and reported in parentheses.