

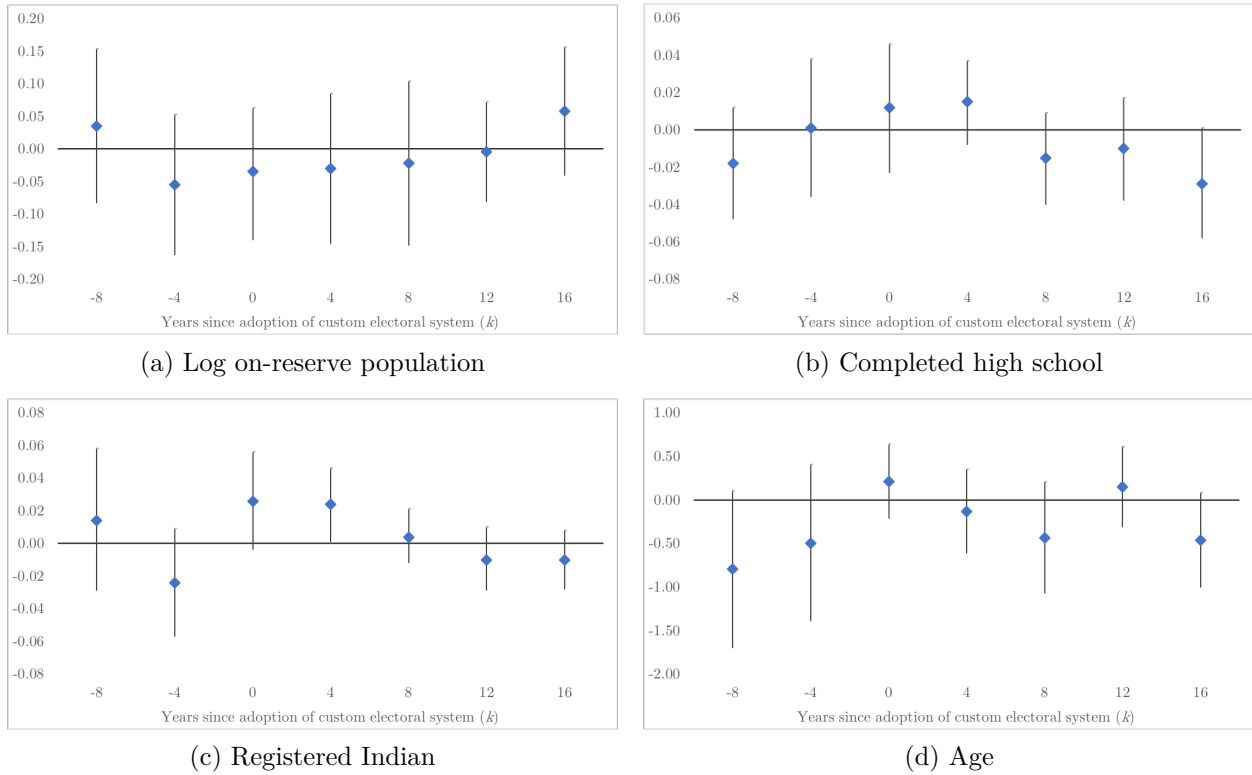
Custom Elections and Local Policies:  
the case of Canada's First Nations  
**Online Appendix**

Fernando M. Aragon and Anke S. Kessler

December 2020

# A Additional figures

Figure A.1: Effect of custom electoral system on population size and composition



*Notes:* Figure displays the estimated effect of adopting a custom electoral system on several outcomes  $k$  years after adoption. Diamonds represent point estimates while lines represent 95% confidence intervals. Each estimate is obtained in a separate regression. Regressions use microdata from repeated cross sections, and cluster S.E. at band level, and include: band and province-by-year fixed effects. Panel (a) uses band-level data. Panels (b), (c) and (d) use individual-level data and includes as controls (unless it is an outcome variable) indicators of employment and labor force participation, log of on-reserve population, household size, age, sex and indicators of high school attainment and being a registered Indian.

## B Additional tables

Table B.1: Summary statistics - Cross section sample

Variable	1996				2011			
	All	Electoral system		Mean comparison p-value	All	Electoral system		Mean comparison p-value
		Non-custom	Custom			Non-custom	Custom	
(1)	(2)	(3)	(4)	(5)	(6)	(7)	(8)	
Has custom electoral system in 2011	0.745	0.000	1.000		0.728	0.000	1.000	
Zone: <50 km of service centre	0.464	0.414	0.482	0.568	0.422	0.398	0.431	0.728
Zone: 50-350 km of service centre	0.381	0.572	0.316	0.019	0.424	0.584	0.364	0.023
Zone: No year-round road access	0.127	0.015	0.165	0.001	0.127	0.018	0.167	0.000
Population	1201.7	522.1	1434.4	0.174	914	629.2	1020.2	0.068
Household income	37,140	35,142	37,824	0.405	52,119	48,827	53,351	0.142
% employment income	42.4	37.6	44	0.208	41.5	41.2	41.5	0.88
HoH size	4.4	4.2	4.4	0.601	4.2	3.9	4.3	0.031
Is female	0.5	0.5	0.5	0.926	0.5	0.5	0.5	0.487
Age	39.3	38.3	39.7	0.403	41.9	41.9	41.9	0.928
Completed high school	0.451	0.489	0.438	0.109	0.521	0.582	0.498	0.018
Registered Indian	0.750	0.841	0.718	0.309	0.865	0.856	0.869	0.794
Labor force	0.558	0.571	0.553	0.367	0.526	0.536	0.522	0.392
Employed	0.409	0.417	0.406	0.573	0.394	0.393	0.395	0.981
Dwelling needs major repairs	0.308	0.312	0.307	0.704	0.292	0.306	0.287	0.172
Live in band housing	0.466	0.578	0.428	0.100	0.539	0.542	0.538	0.979

*Notes:* Table presents average values for individuals aged 15 and older and living in the sample of bands (n=269) used in Table 1. Zone refers to the geographic zone used by ISC to calculate bands' funding. Columns 4 and 8 display p-values of mean comparison tests for custom and non-custom bands.

Table B.2: Summary statistics - Panel data sample

Variable	1996 (1)	2011 (2)	p-value (3)
Has custom electoral system	0.440	0.955	0.000
Zone: <50 km of service centre	0.515	0.575	0.365
Zone: 50-350 km of service centre	0.436	0.393	0.537
Zone: No year-round road access	0.049	0.032	0.202
Population	915.8	1492.8	0.002
Household income	36,137	54,267	0.000
% employment income	42.4	41.3	0.515
HoH size	4.4	4	0.002
Is female	0.5	0.5	0.000
Age	39.4	43.2	0.000
Completed high school	0.440	0.567	0.000
Registered Indian	0.794	0.786	0.985
Labor force	0.548	0.524	0.034
Employed	0.396	0.408	0.745
Dwelling needs major repairs	0.310	0.291	0.085
Live in band housing	0.522	0.459	0.261

*Notes:* Table presents average values for individuals aged 15 and older and living in the sample of bands (n=104) used in Figure 1. Zone refers to the geographic zone used by ISC to calculate bands' funding. Column 3 displays p-value of mean comparison test of columns 1 and 2.

Table B.3: Custom election systems and financial indicators

	Financial assets / revenue (1)	Non-financial assets / revenue (2)	Net total assets / revenue (3)	Assets per capita (000s)		
				Financial (4)	Non-Financial (5)	Net total (6)
Has custom electoral system	0.239 (0.246)	-1.213 (1.161)	-0.975 (1.298)	6.661 (3.969)	-14.351 (178.468)	-7.689 (17.801)
Mean outcome	0.237	1.647	1.883	30.3	69.0	99.3
Observations	270	270	270	270	270	270
R-squared	0.759	0.505	0.541	0.656	0.436	0.552

*Notes:* Standard errors (in parenthesis) are clustered by province-by-geographic zone (n=26). Regressions used band-level data. All specifications include census division and province-by-geographic zone fixed effects, log of per capita band revenue and on-reserve population characteristics: log of population size, share of Aboriginal population, share of band housing dwellings, and labor force participation rate.