

Union Employment and Old-Age Health

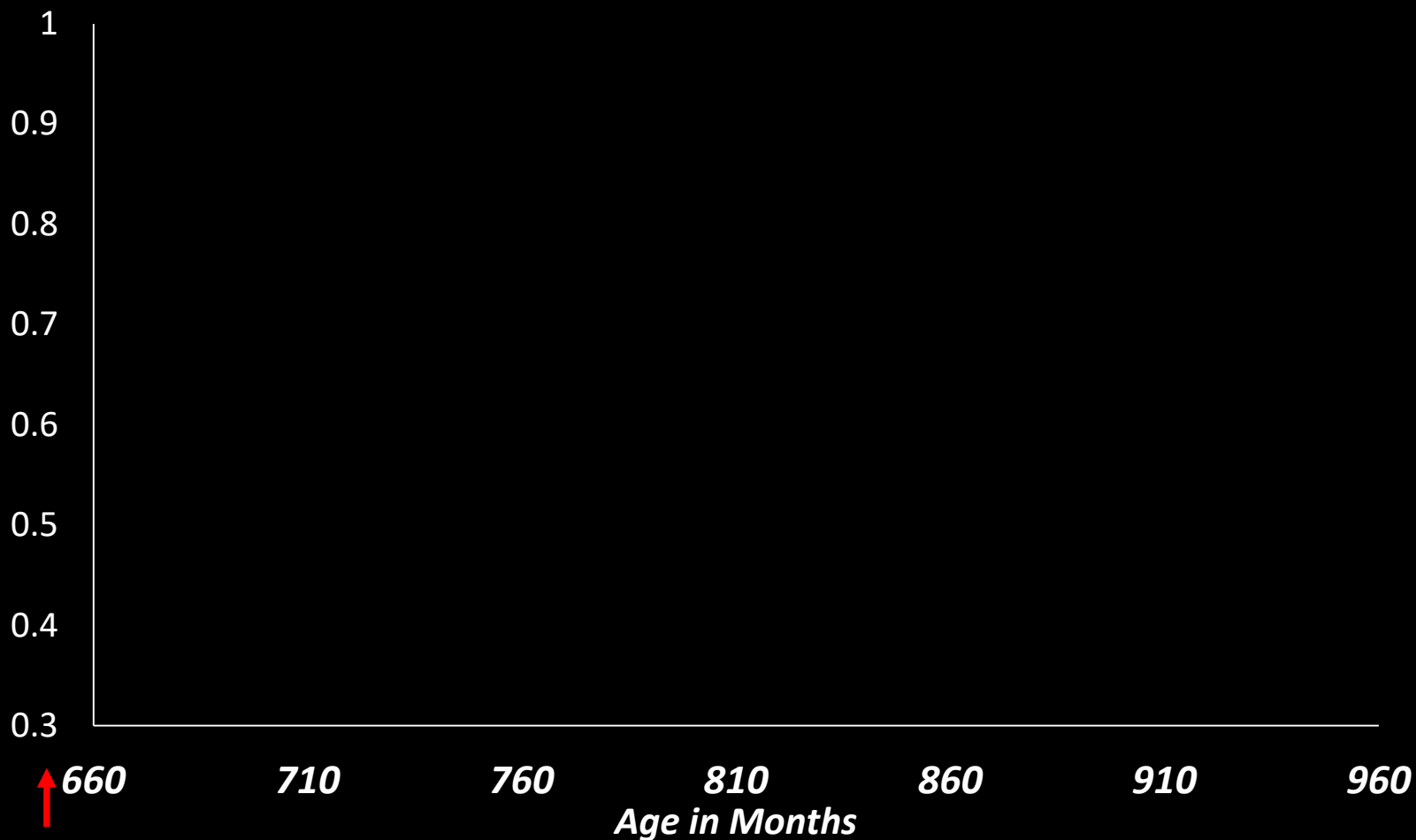
*Evidence from the Health and
Retirement Study*

Darren Grant
Sam Houston State University

- Taking the Long View
- Union Workers Are Less Healthy
- Even though Union Jobs Are Better for Your Health
- Why?

Survival in the First Cohort of the Health and Retirement Study:

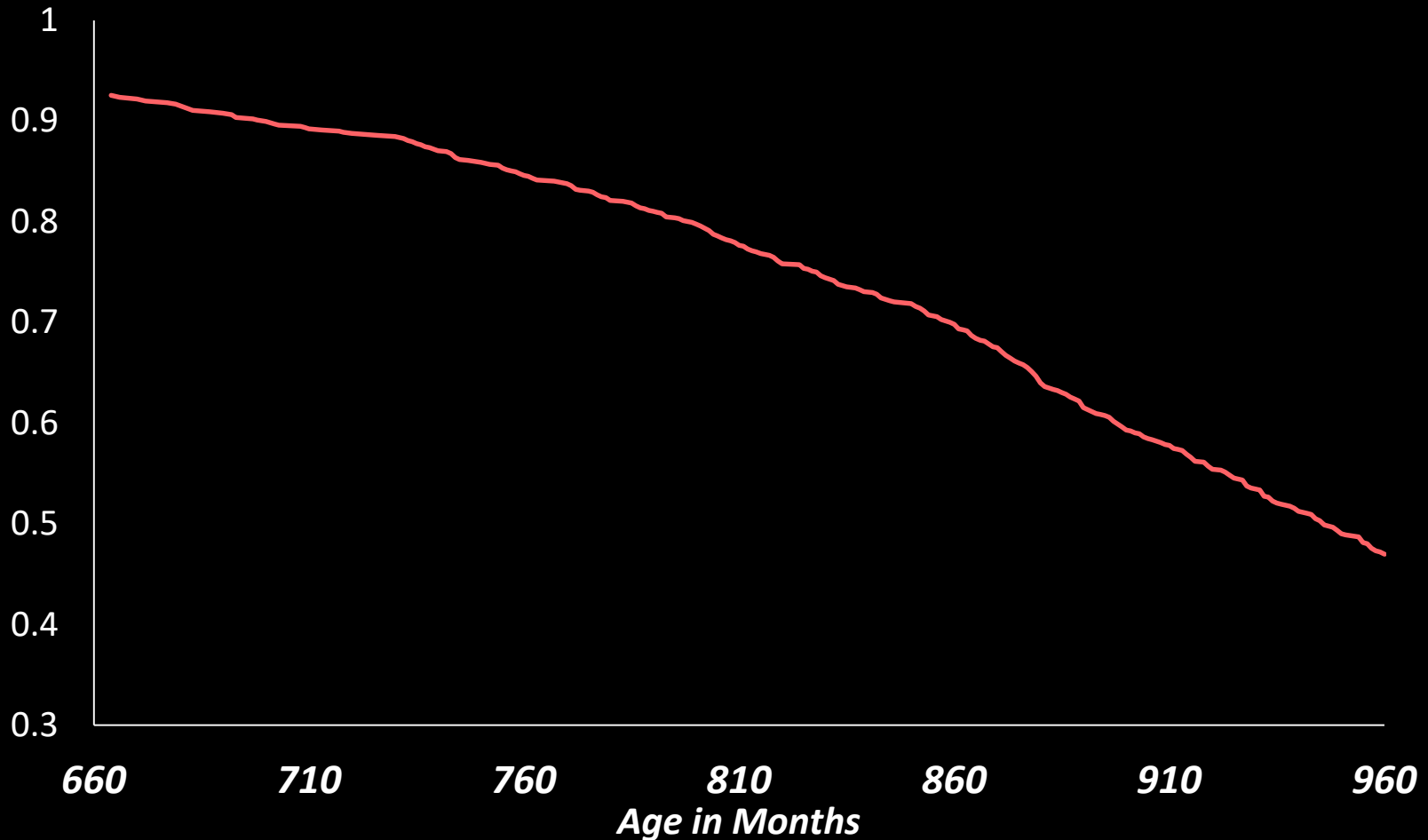
~1000 *Long-Tenure* (≥ 10 yrs) Union Workers



Union Status Determined Here

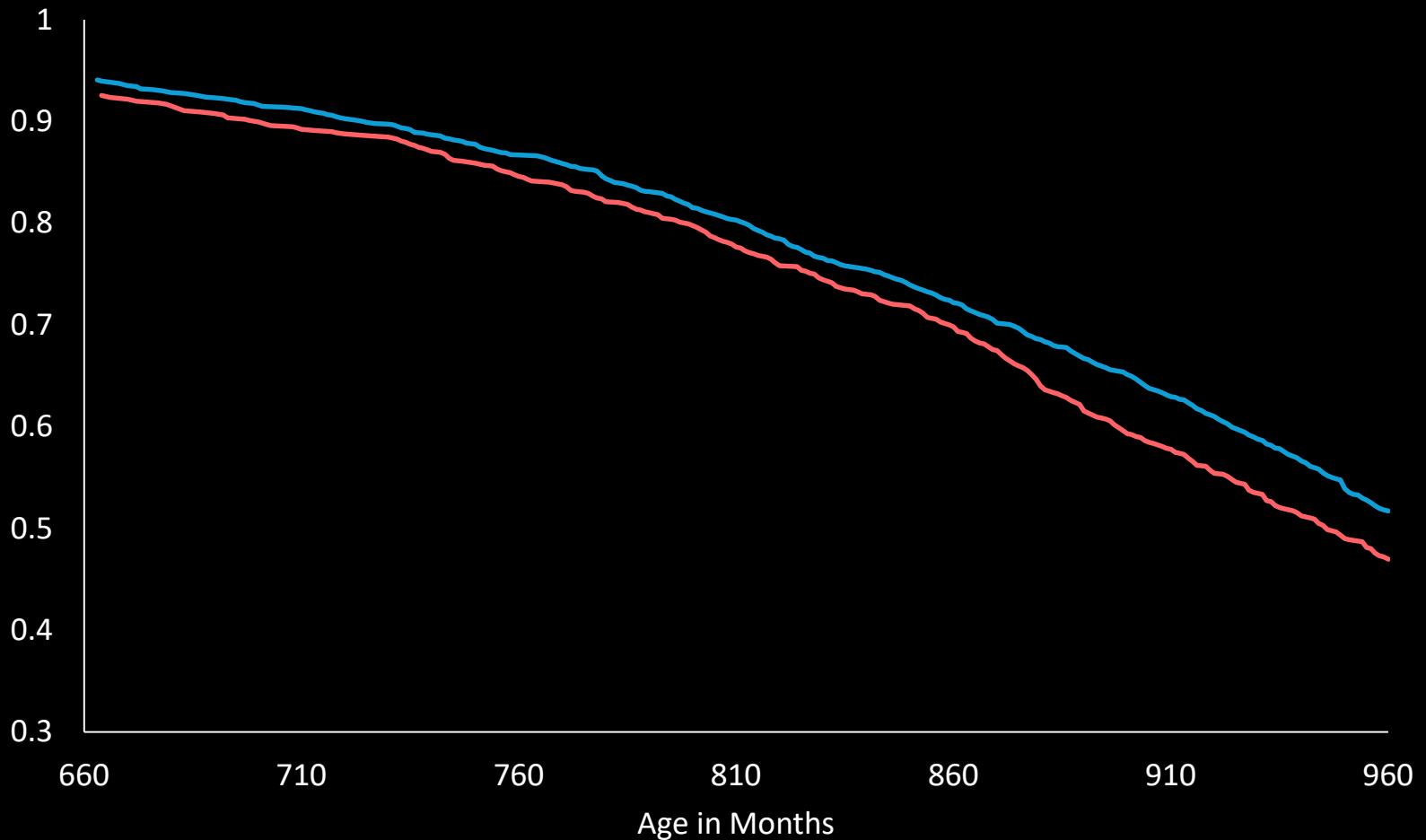
- Taking the Long View
- Union Workers Are Less Healthy
- Even though Union Jobs Are Better for Your Health
- Why?

Survival in the First Cohort of the HRS: ~1000 *Long-Tenure* Union Workers



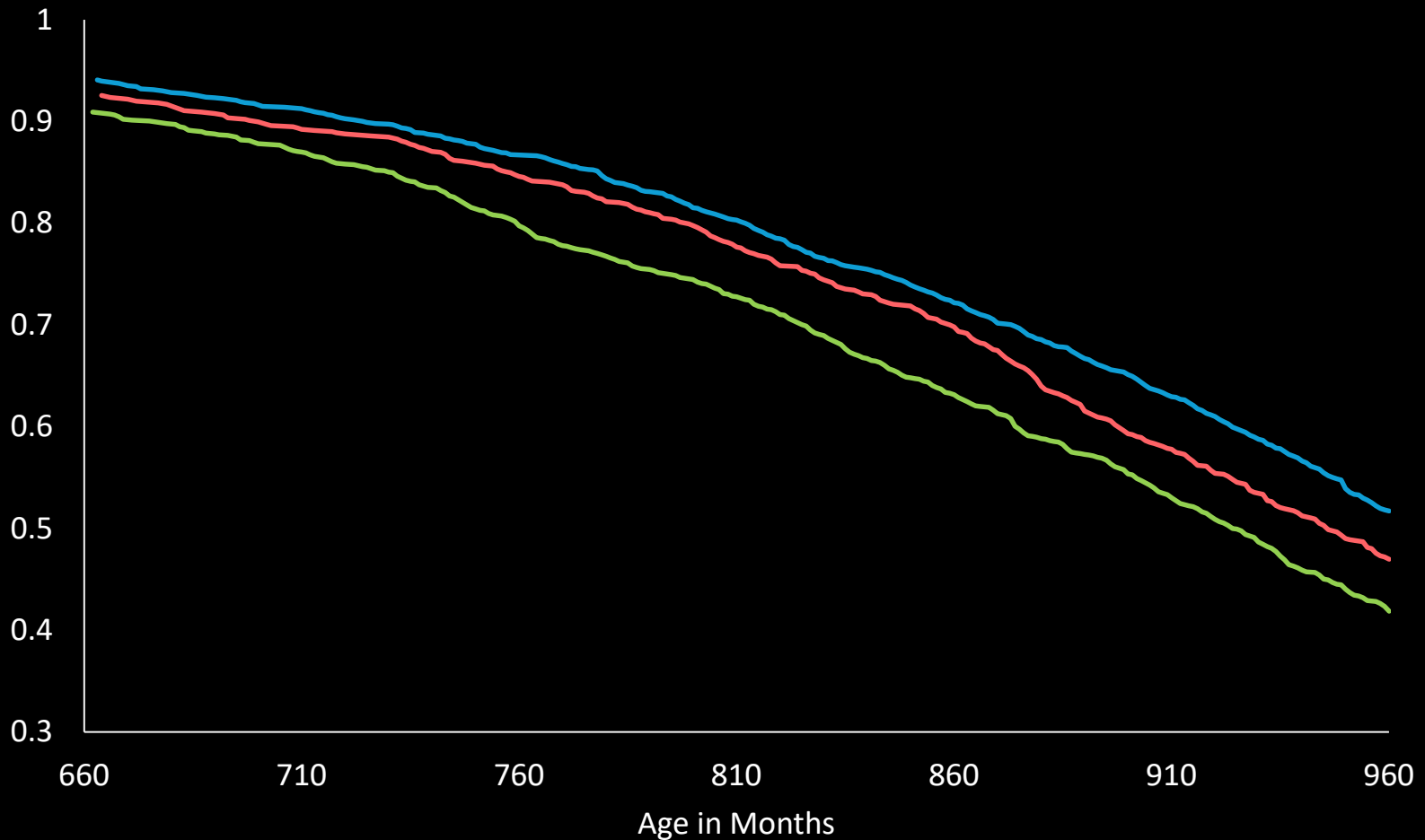
Survival Analysis:

Long-Tenure Union, Long-Tenure Nonunion

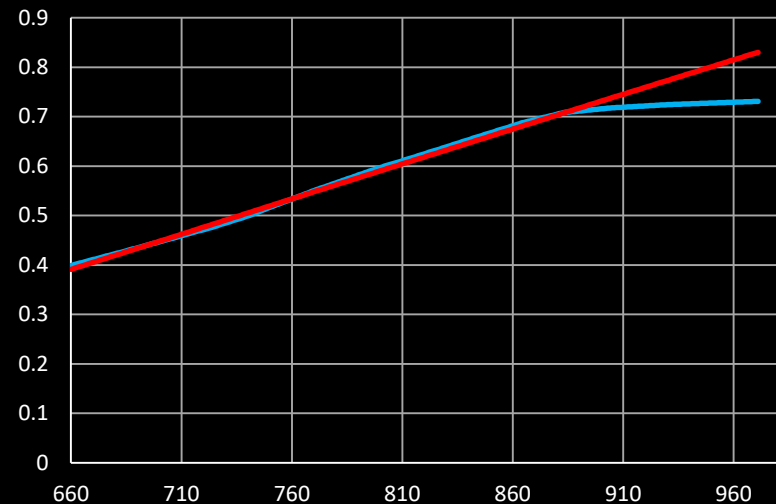
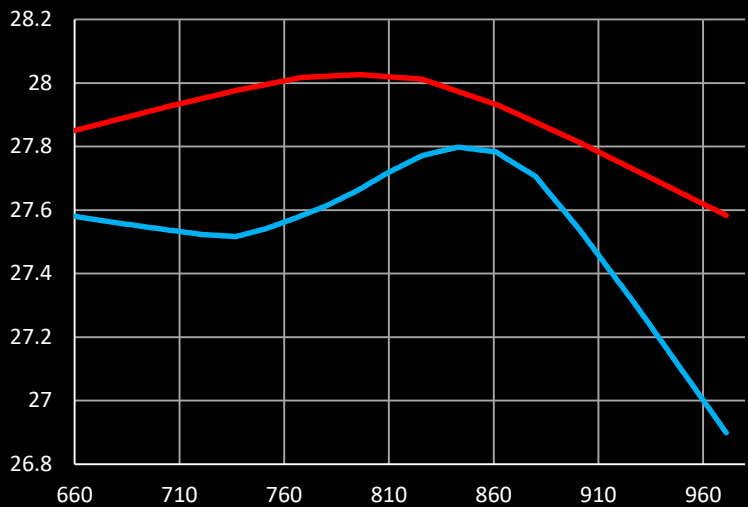
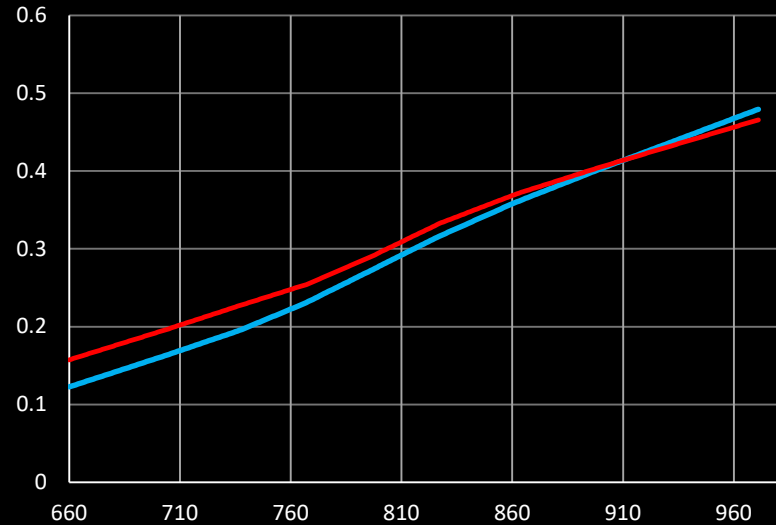
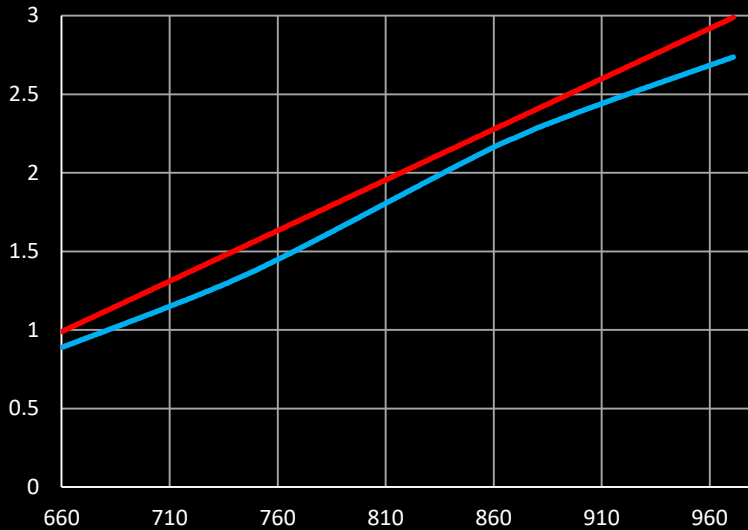


Survival Analysis:

Long-Tenure Union, Long-Tenure Nonunion, Short-Tenure Workers



Index of Major Physical Conditions, Heart Problems, BMI, High Blood Pressure

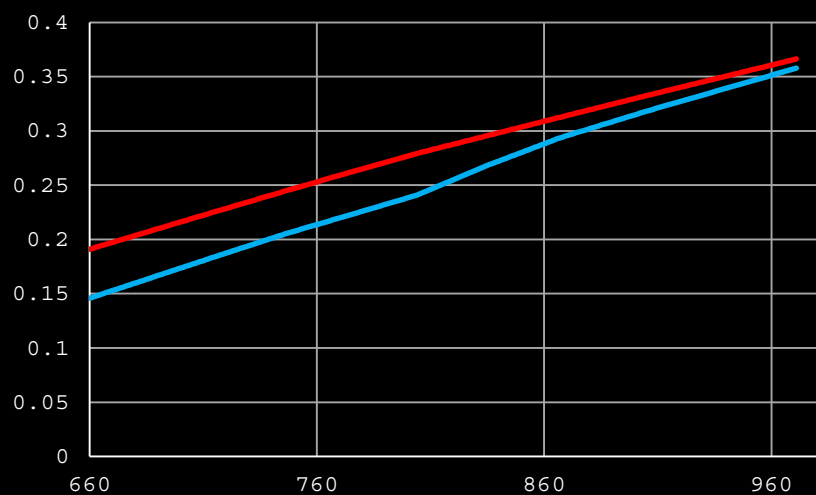
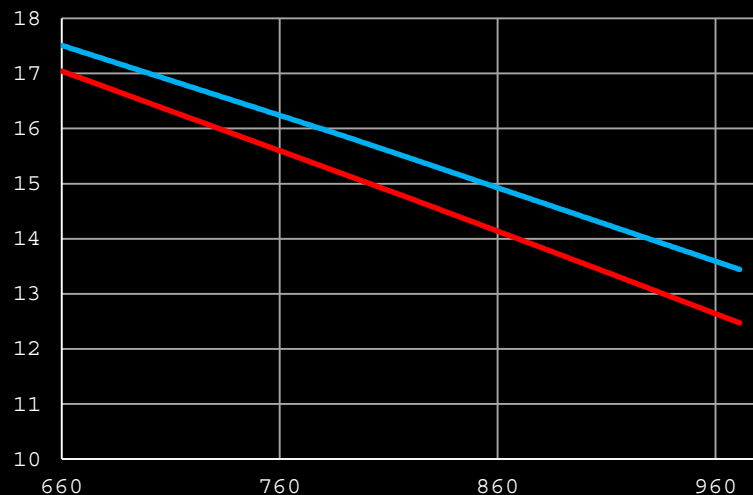
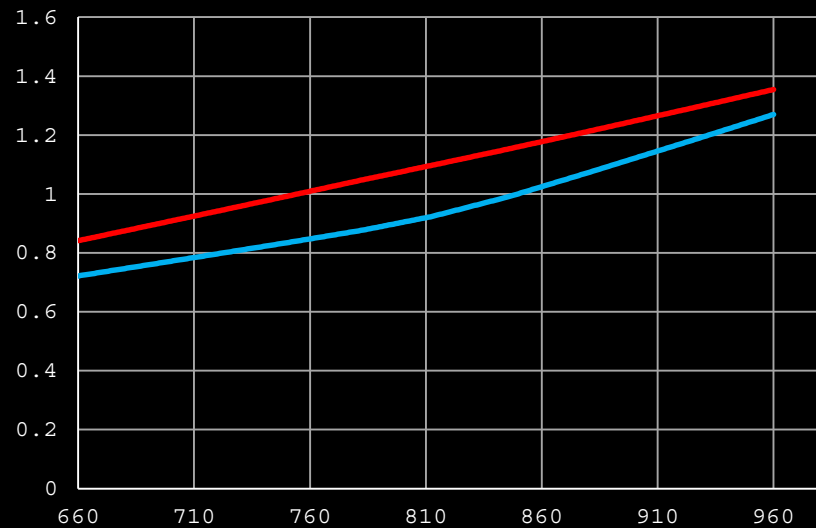
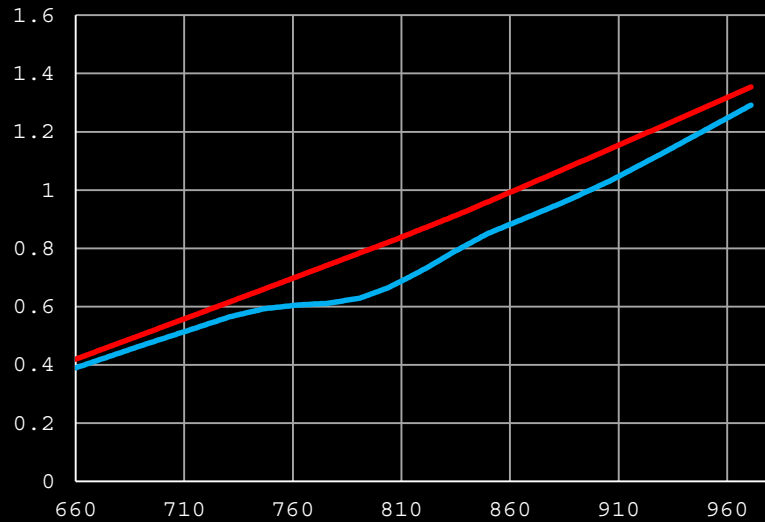


UNION

NONUNION

LOWER IS BETTER

Mobility Problems, Large Muscle Problems, Cognitive Skills*, Hospitalization



UNION

NONUNION

LOWER IS BETTER EXCEPT FOR *

- Taking the Long View
- Union Workers Are Less Healthy
- Even though Union Jobs Are Better for Your Health
- Why?

Evidence on Unions' Effects on Possible Mechanisms

<i>Subject</i>	<i>Findings</i>	<i>Authors</i>
Health Insurance	Greater Incidence	Buchmueller et al., 2002
Occupational Safety / Worker Compensation	Improves	Hirsch et al., 1997
Pensions	Greater Incidence	Freeman and Medoff, 1984
Wages and Earnings	15-25% Higher	Budd and Na, 2000, and many others
Job Stress	Less Stress	Branchflower and Bryson, 2020 Farber et al., 2018

Differences in Selected Job Characteristics

VARIABLE	UNION MEAN	NONUNION MEAN	EFFECT ON HEALTH
Log(Wages)	3.0	2.8	+
Log(HH Inc)	10.6	10.8	+
Hours/Week	43.0	46.4	~ 0
Physical Effort*	2.47	2.81	~ 0
Heavy Lifting*	3.05	3.33	-
Health Ins. in Retirement	0.74	0.50	+
Pension	0.96	0.58	+
Defined Benefit	0.53	0.30	~ 0

* On a scale of 1-4, where 1 = most and 4 = least.

Methods

Analyze:

- Indices of specific conditions (regression)
- Mortality (proportional hazard model)
- Self-Reported Health (ordered logit)

With three sets of controls:

- None
- Basic (occupation, industry, education, demographics)
- Full (add job characteristics, income, benefits)

Key Parameter Estimate:

- Long Term Union Dummy (vs. Long Term Nonunion)

Results

(estimates on long term union dummy, all significant)

<i>Dependent Variable</i>	<i>No Controls</i>	<i>Basic Controls</i>	<i>Full Controls</i>
Self-Reported Health (units of latent variable)	0.50	0.30	0.59
Mortality (mortality rate)	0.16	0.09	0.18
Index of Eight Major Health Conditions	0.17	0.10	0.12
Hospitalization in Previous 2 Years (dummy)	0.03	0.03	0.04
Functional Limitations and Mental Health	sizeable gaps	much smaller gaps	even smaller gaps

- Taking the Long View
- Union Workers Are Less Healthy
- Even though Union Jobs Are Better for Your Health
- Why?

No Sign of Selection

Self-Reported Health

Mortality

<i>Basic Spec.</i>	Short Tenure	Long Tenure
Nonunion	0.054 (0.122)	----
Union	-0.056 (0.175)	0.293 (0.093)

<i>Basic Spec.</i>	Short Tenure	Long Tenure
Nonunion	0.051 (0.085)	----
Union	0.034 (0.118)	0.089 (0.064)

<i>Full Spec.</i>	Short Tenure	Long Tenure
Nonunion	0.164 (0.144)	----
Union	0.025 (0.211)	0.575 (0.117)

<i>Basic Spec.</i>	Short Tenure	Long Tenure
Nonunion	-0.029 (0.116)	----
Union	0.061 (0.166)	0.192 (0.095)

in both models, negative estimates are good

Factors Worsening Union Health

On net, income works *against* union workers. Lower HH income outweighs higher own-earnings.

Family structure plays a small contributory role (in addition to any effects on income). Union workers are more family-oriented (more marriages, children).

Psychosocial factors play at best a small contributory role. Less stress is offset by less “happiness.”

In Conclusion

Union workers have higher mortality and worse health and functionality, even though union jobs are better for your health. Go figure.

Differences in family structure and psychosocial factors play a small contributory role. No sign of negative selection (by health into unions).

No Sign of Selection: **Self-Reported Health** (average two waves before & two waves after)

<i>Before</i>	Stay	Switch to:	<i>After</i>	Stay	Switch to:
Nonunion	0	0.005 (0.077)	Nonunion	0	0.001 (0.078)
Union	0.001 (0.029)	-0.102 (0.092)	Union	0.025 (0.175)	-0.152 (0.093)

Scale: 1 = Excellent . . . 5 = Poor,
Control for age, race, education,
All HRS Cohorts