

Supplemental Appendix
Black/White Gaps in Employer-Sponsored Health Insurance

By HELEN LEVY

Figure S1: Black-White Gap in Employer-Sponsored Health Insurance
Male Workers Ages 25-54, CPS ASEC, 1988 -2023

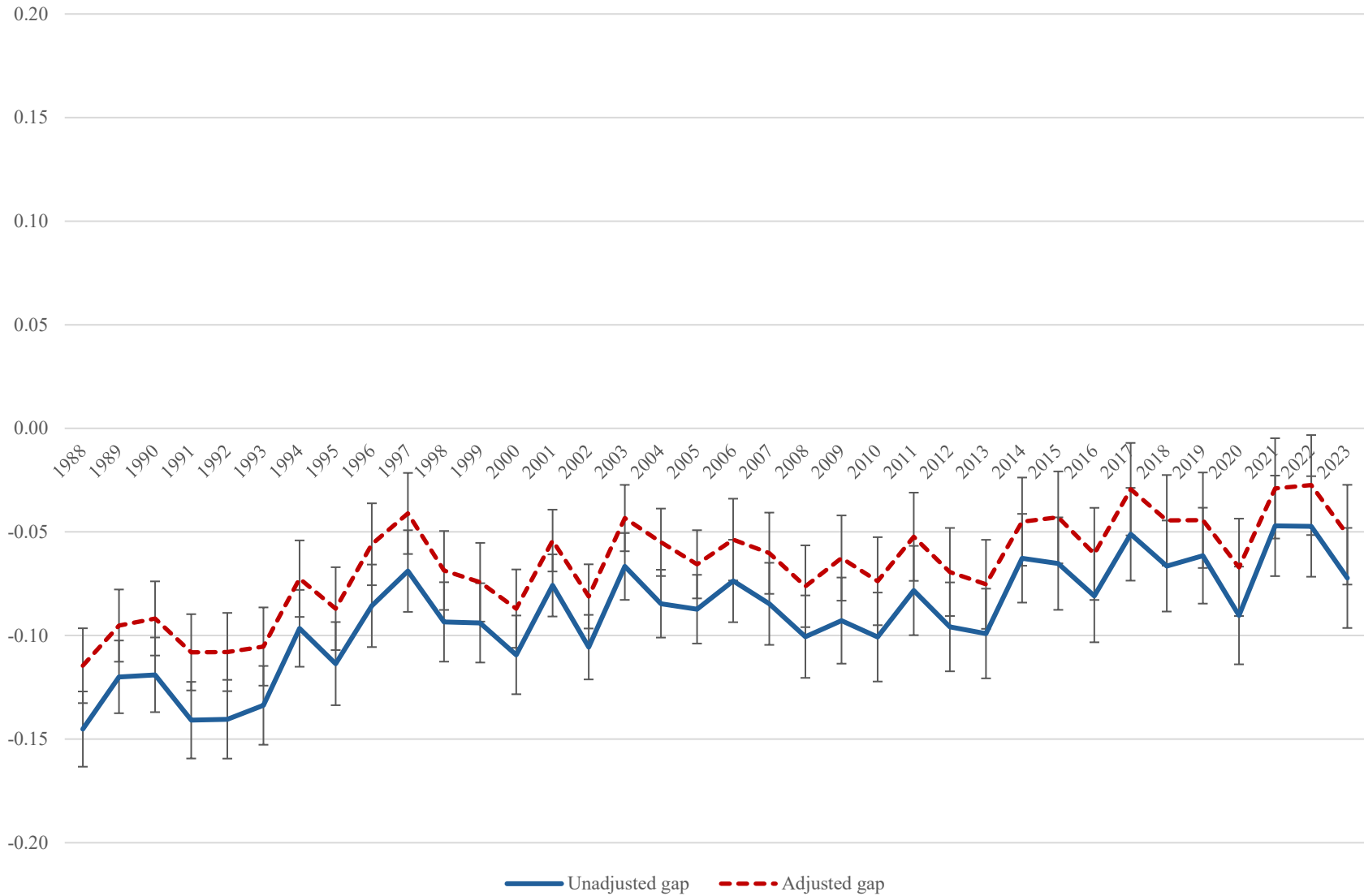


Figure S2: Black-White Gap in Employer-Sponsored Health Insurance
Female Workers Ages 25-54, CPS ASEC, 1988 -2023

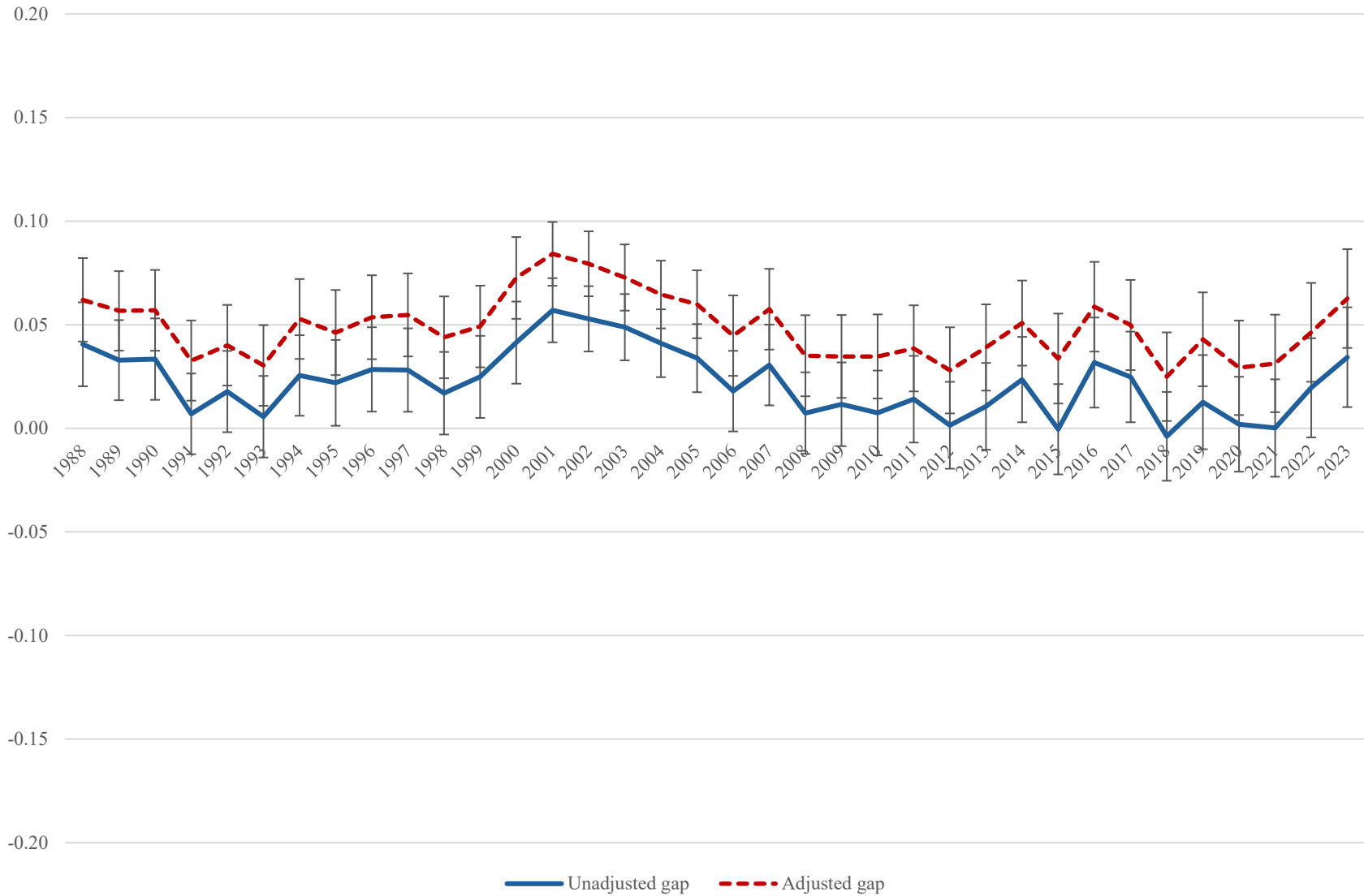


Table S1
 Decomposition of Black-White Health Own-Employer Insurance Gaps among Workers
 into Components Due to Offering, Eligibility, and Takeup by Year, 1988 - 2017
 CPS Benefits/Contingent Work Supplements

	1988	1993	1995	1997	1999	2001	2005	2017
ALL WORKERS								
Gap in coverage	-0.031	-0.001	-0.013	0.008	0.009	-0.005	0.003	0.003
Gap due to offering	-0.040	-0.021	-0.013	-0.023	-0.001	-0.022	-0.002	0.005
Gap due to eligibility	0.001	-0.001	-0.004	0.014	-0.005	-0.002	0.002	-0.004
Gap due to takeup	0.007	0.020	0.004	0.017	0.014	0.018	0.004	0.002
MALE WORKERS								
Gap in coverage	-0.106	-0.065	-0.062	-0.045	-0.060	-0.056	-0.040	-0.055
Gap due to offering	-0.069	-0.052	-0.030	-0.040	-0.025	-0.051	-0.012	-0.015
Gap due to eligibility	-0.014	-0.022	-0.013	-0.005	-0.023	-0.008	-0.009	-0.015
Gap due to takeup	-0.019	0.009	-0.017	0.001	-0.012	0.003	-0.018	-0.023
FEMALE WORKERS								
Gap in coverage	0.060	0.074	0.046	0.070	0.087	0.056	0.055	0.066
Gap due to offering	-0.008	0.008	0.004	-0.006	0.022	0.002	0.007	0.024
Gap due to eligibility	0.019	0.022	0.009	0.036	0.016	0.009	0.015	0.010
Gap due to takeup	0.049	0.047	0.035	0.043	0.052	0.046	0.034	0.033

Note: The sample includes wage and salary workers between the ages of 25 and 54 who are Black non-Hispanic or White non-Hispanic. Decomposition methods are described in the text.

Sources: CPS Employee Benefits Supplements from May 1988 and April 1993; CPS Supplements on Contingent and Alternative Employment Arrangements from February 1995, 1997, 1999, 2001, and 2005; and May 2017.